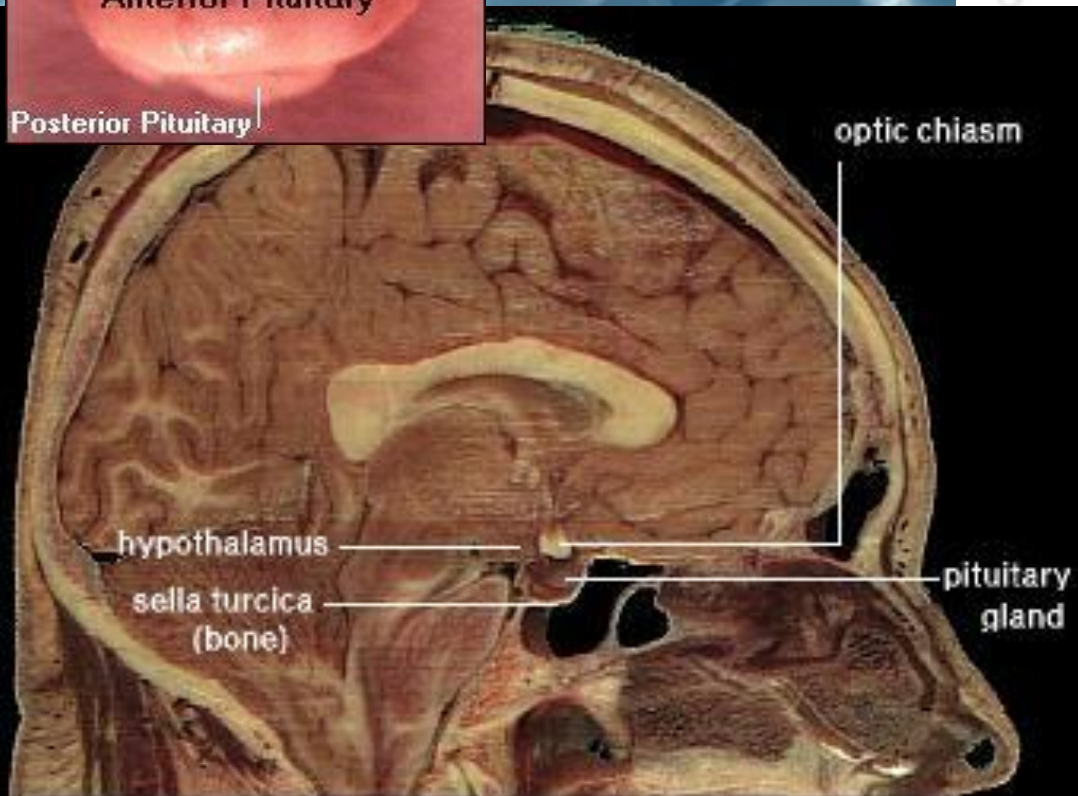
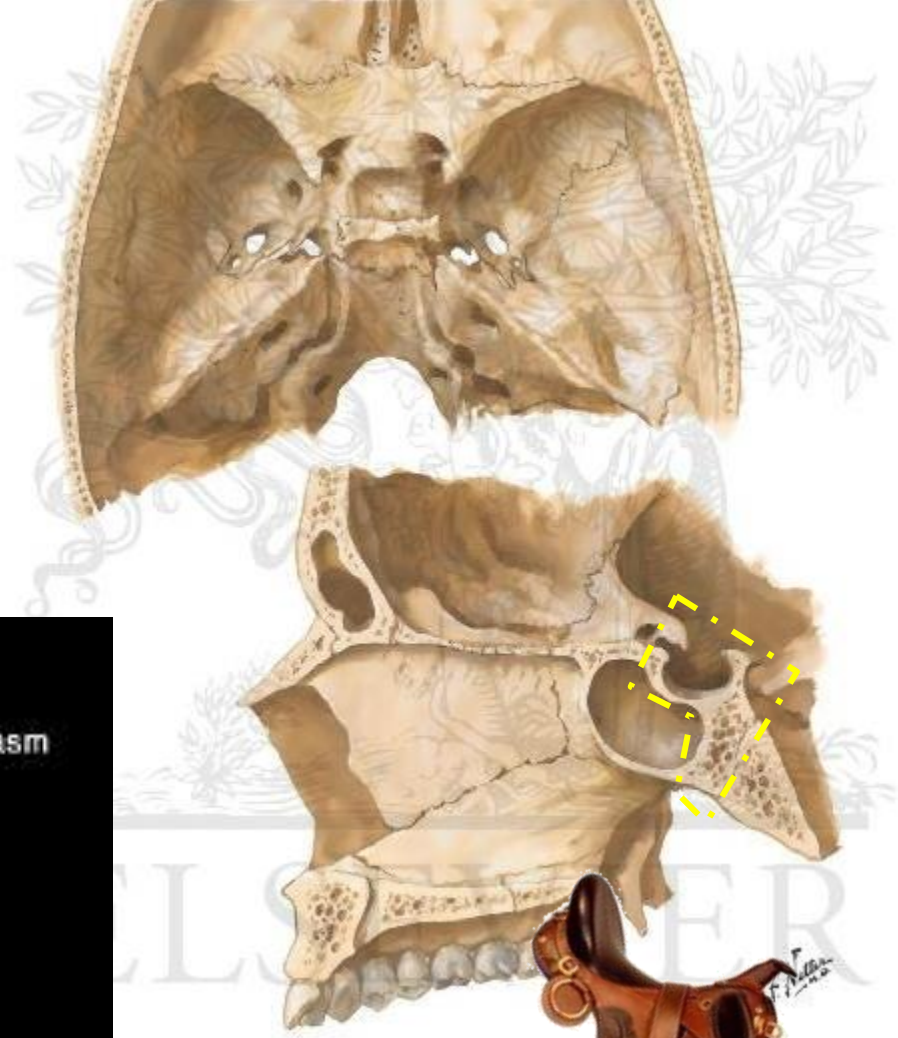
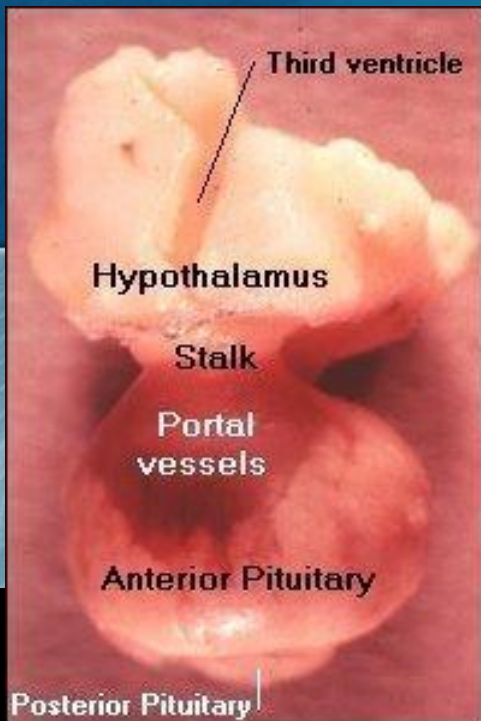


# Endokrin Organlar

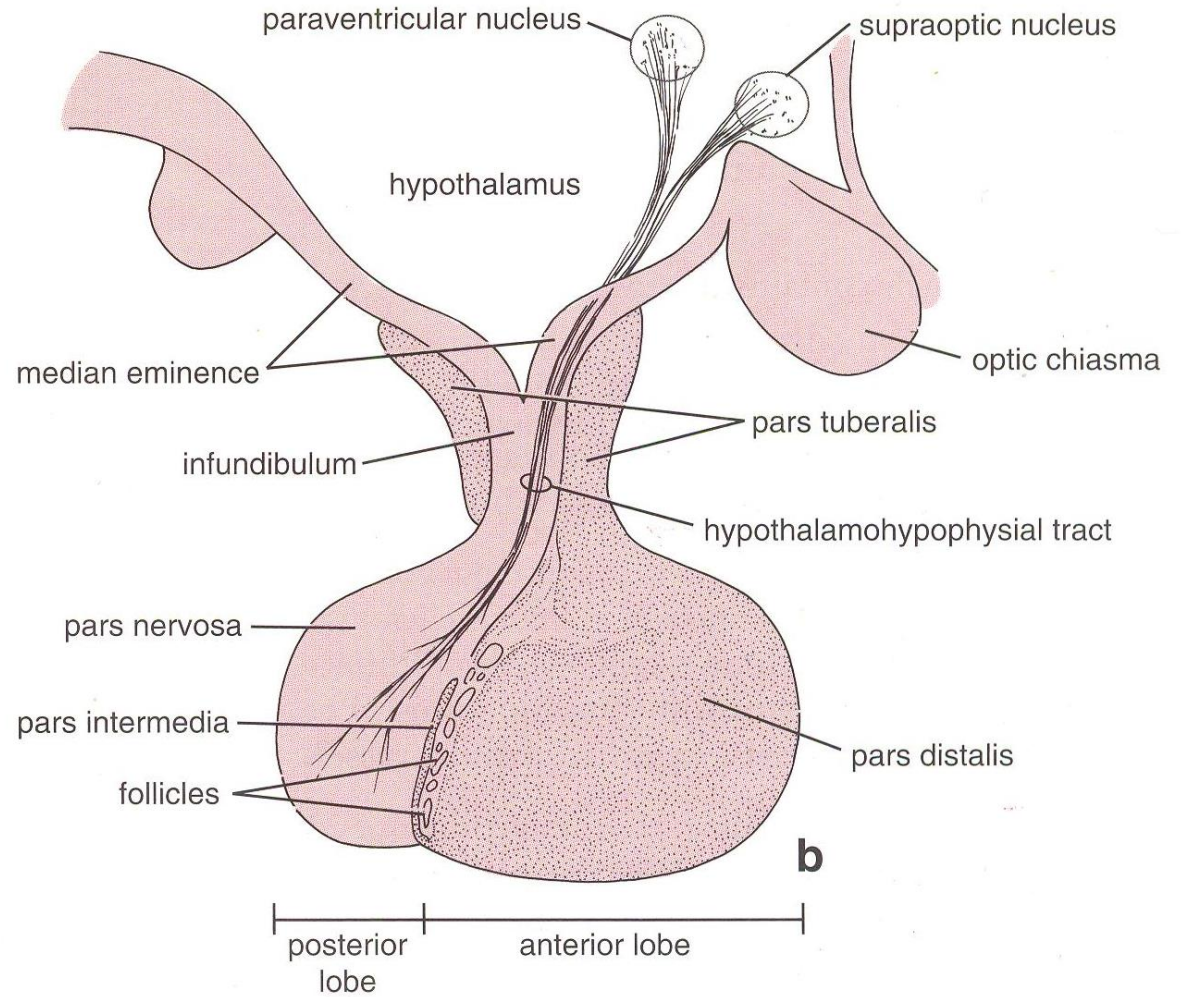
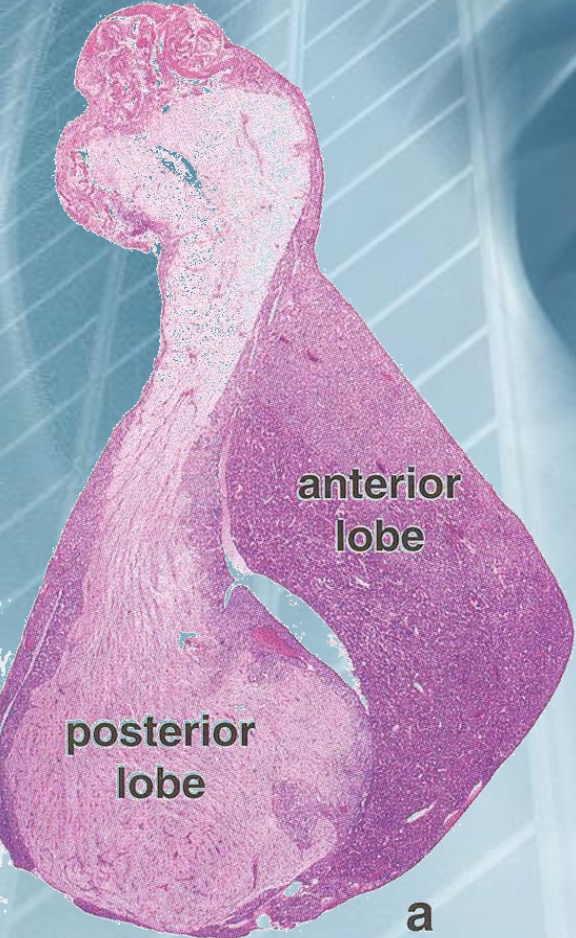
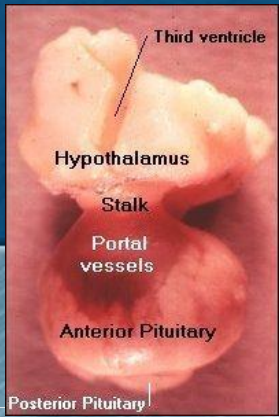
Doç.Dr.Bülent AYAS

# Hipofiz



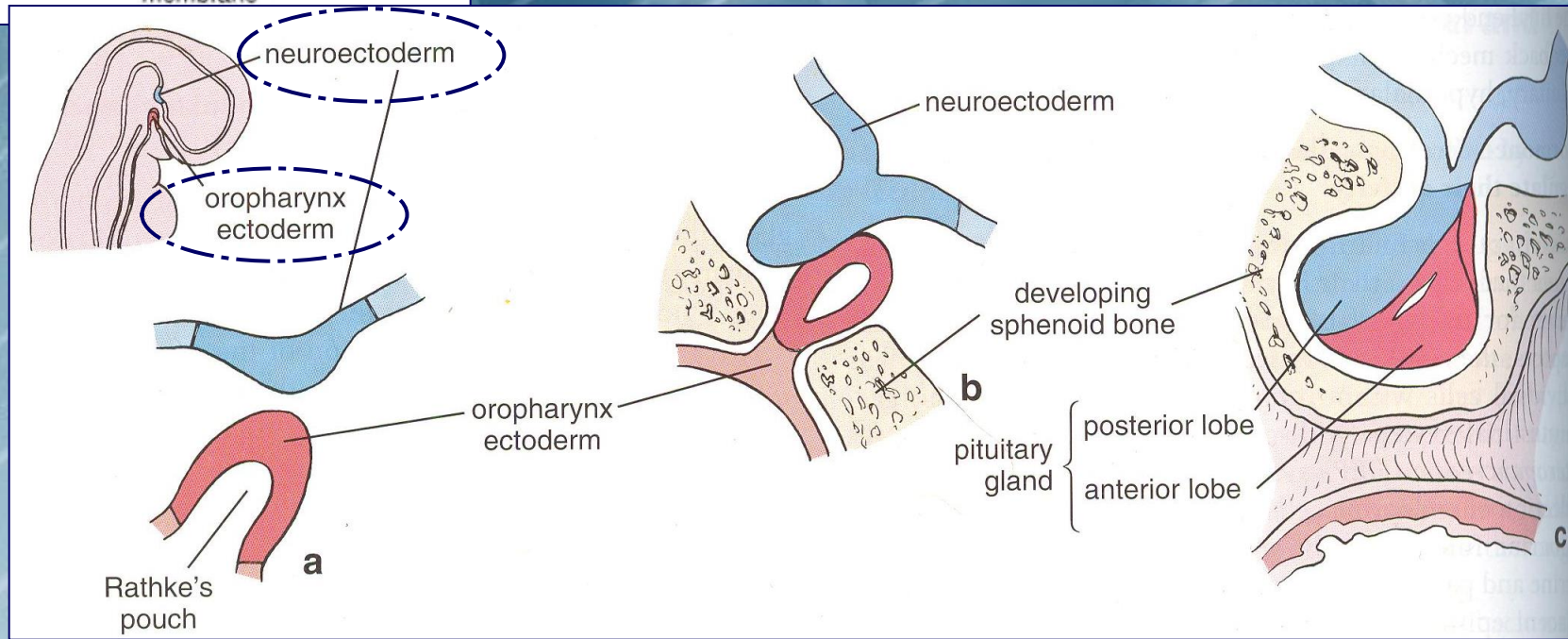
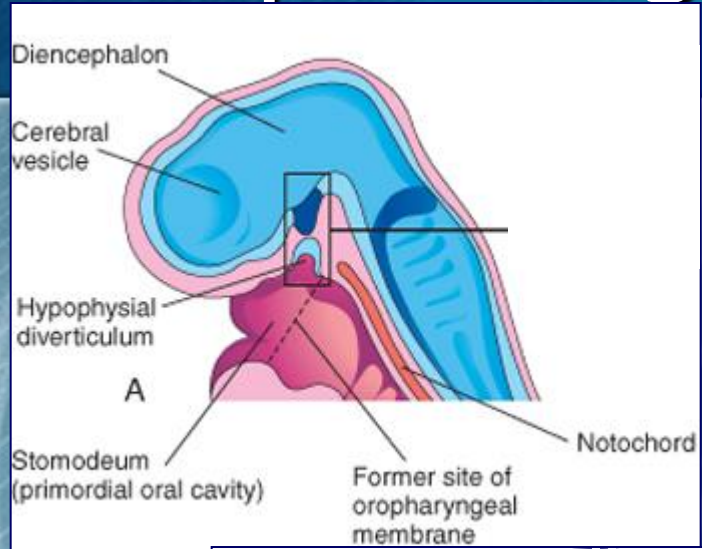


# Hipofiz

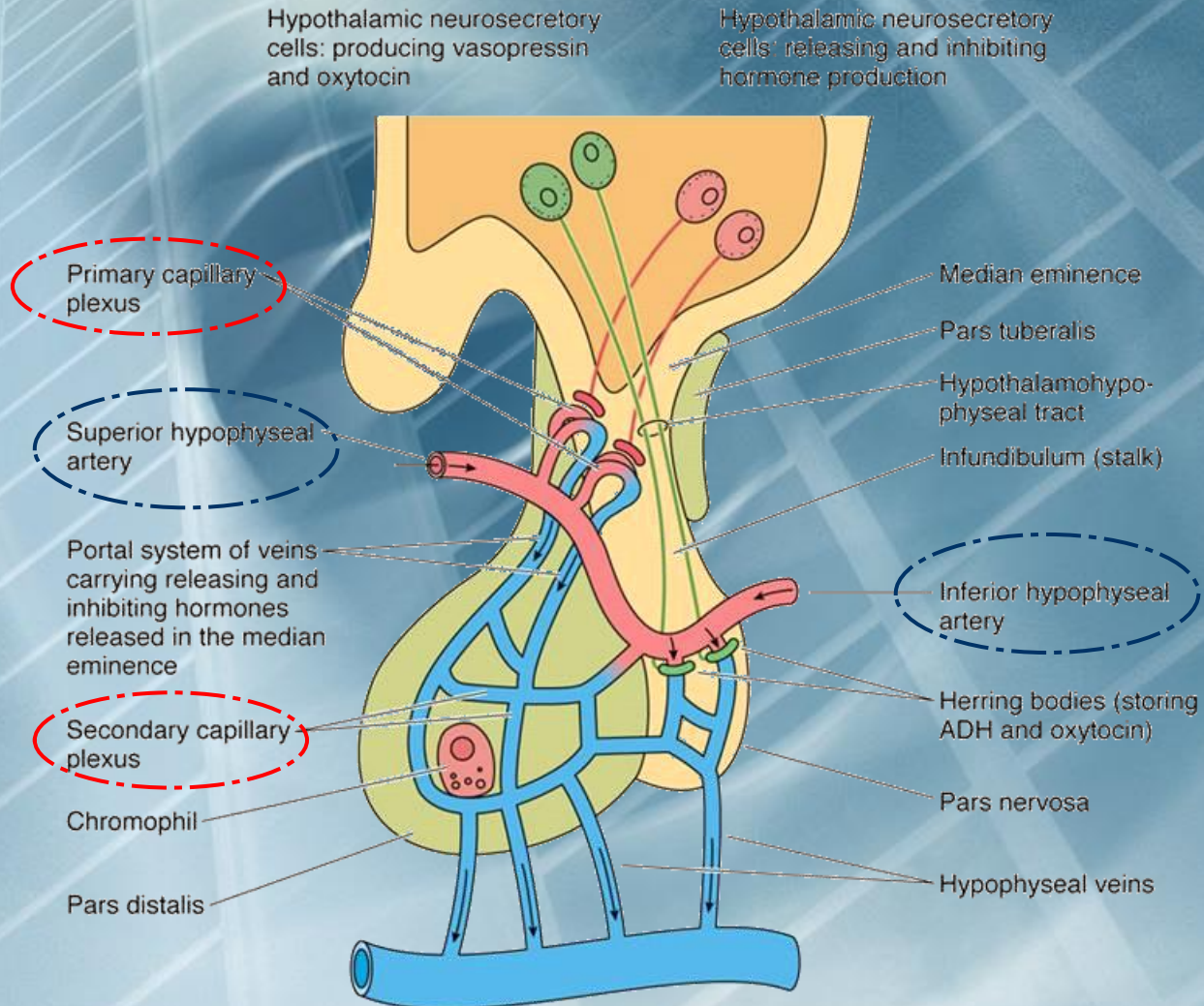




# Hipofiz – gelişimi

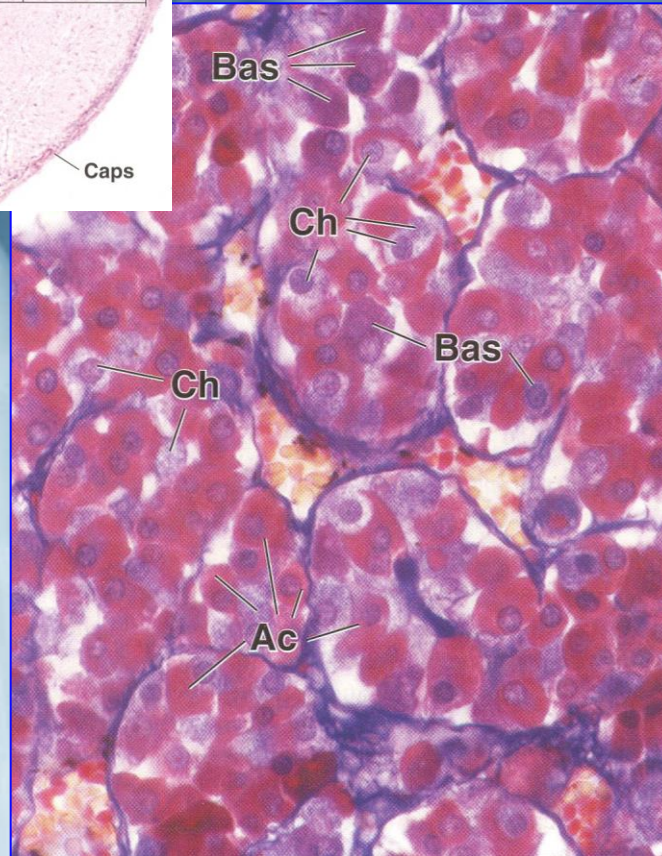
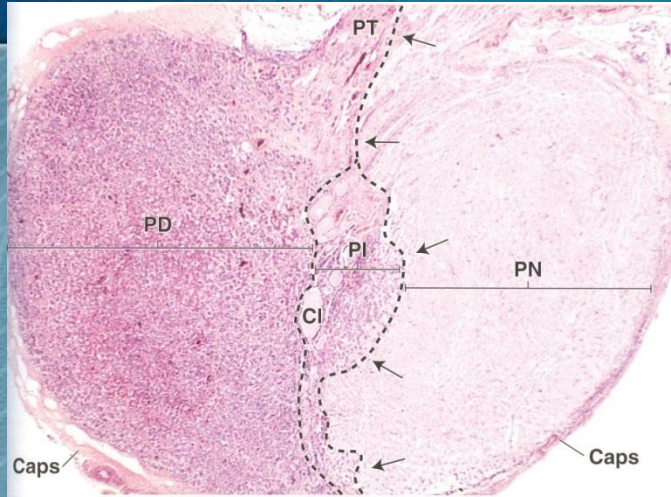


# Hipotalamohipofizyal Portal Dolaşım





# Adenohipofiz – pars distalis



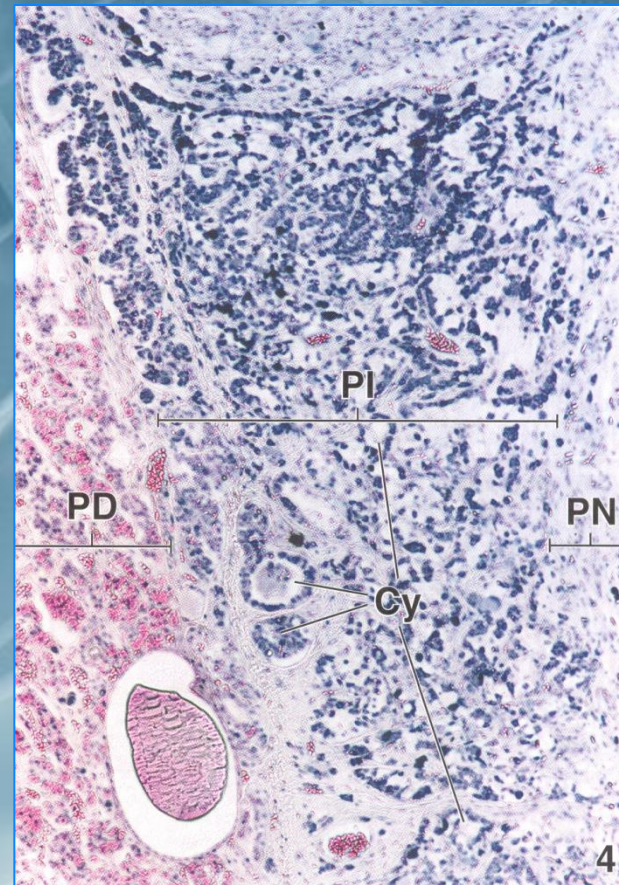
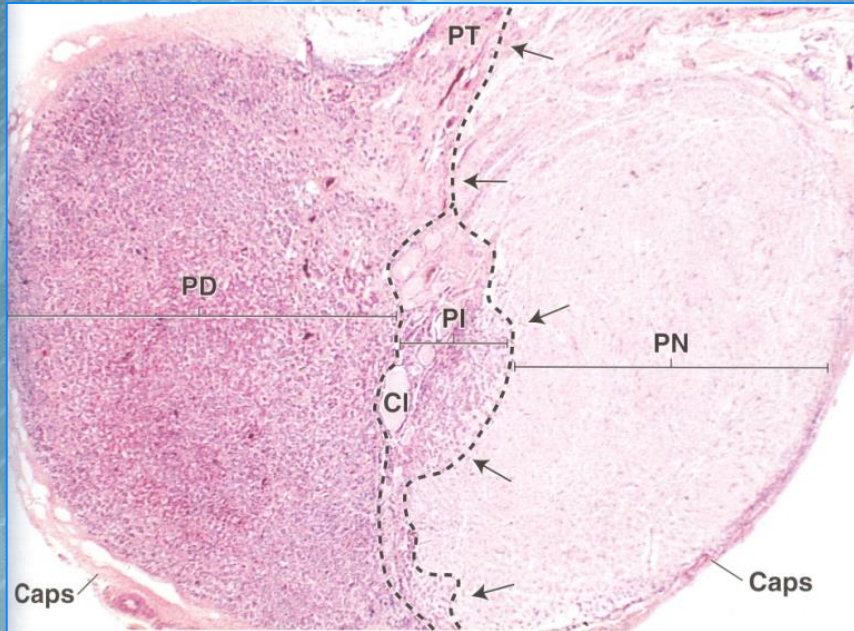
- Epitelyal hücre kordonları
- Stroma
- Pencerele tip kapiller ağ

# Adenohipofiz – pars distalis

Cell Type	Percentage of Total Cells	General Staining	Specific Staining	Product
Somatotrope (GH cell)	50	Acidophil	Orange G (PAS -)	Growth hormone (GH)
Lactotrope (PRL cell)	15–20	Acidophil	Orange G (PAS -) Herlant's erythrosin Brooke's carmosine	Prolactin (PRL)
Corticotrope (ACTH cell)	15–20	Basophil	Lead hematoxylin (PAS +)	Proopiomelanocortin (POMC), which is cleaved in human into adrenocorticotrophic hormone (ACTH) and $\beta$ -lipotrophic hormone ( $\beta$ -LPH)
Gonadotrope (FSH and LH cells)	10	Basophil	Aldehyde-fuchsin Aldehyde-thionine (PAS +)	Follicle-stimulating hormone (FSH) and luteinizing hormone (LH)
Thyrotrope (TSH cell)	~5	Basophil	Aldehyde-fuchsin Aldehyde-thionine (PAS +)	Thyrotropic hormone (TSH)

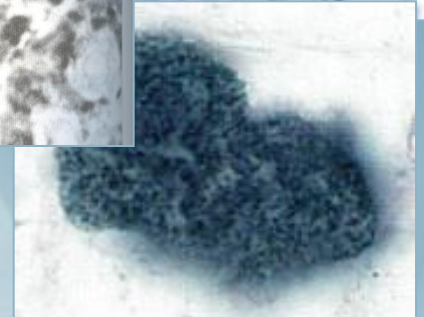
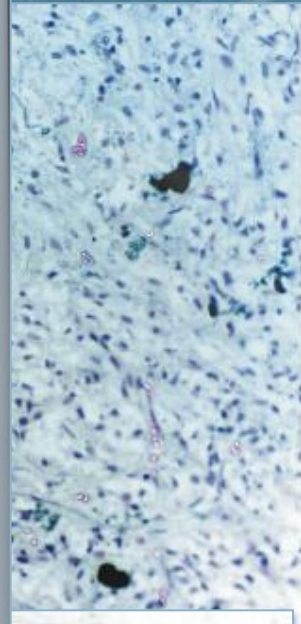
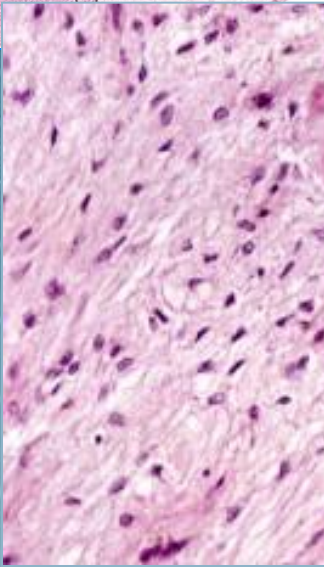
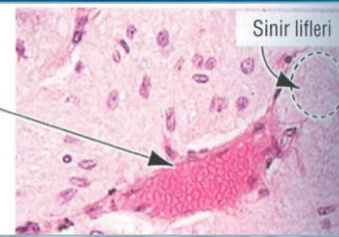
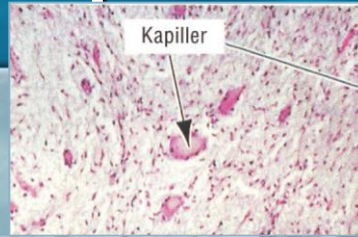
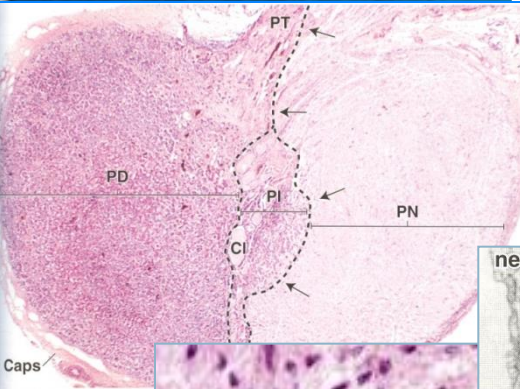


# Adenohipofiz – pars intermedia





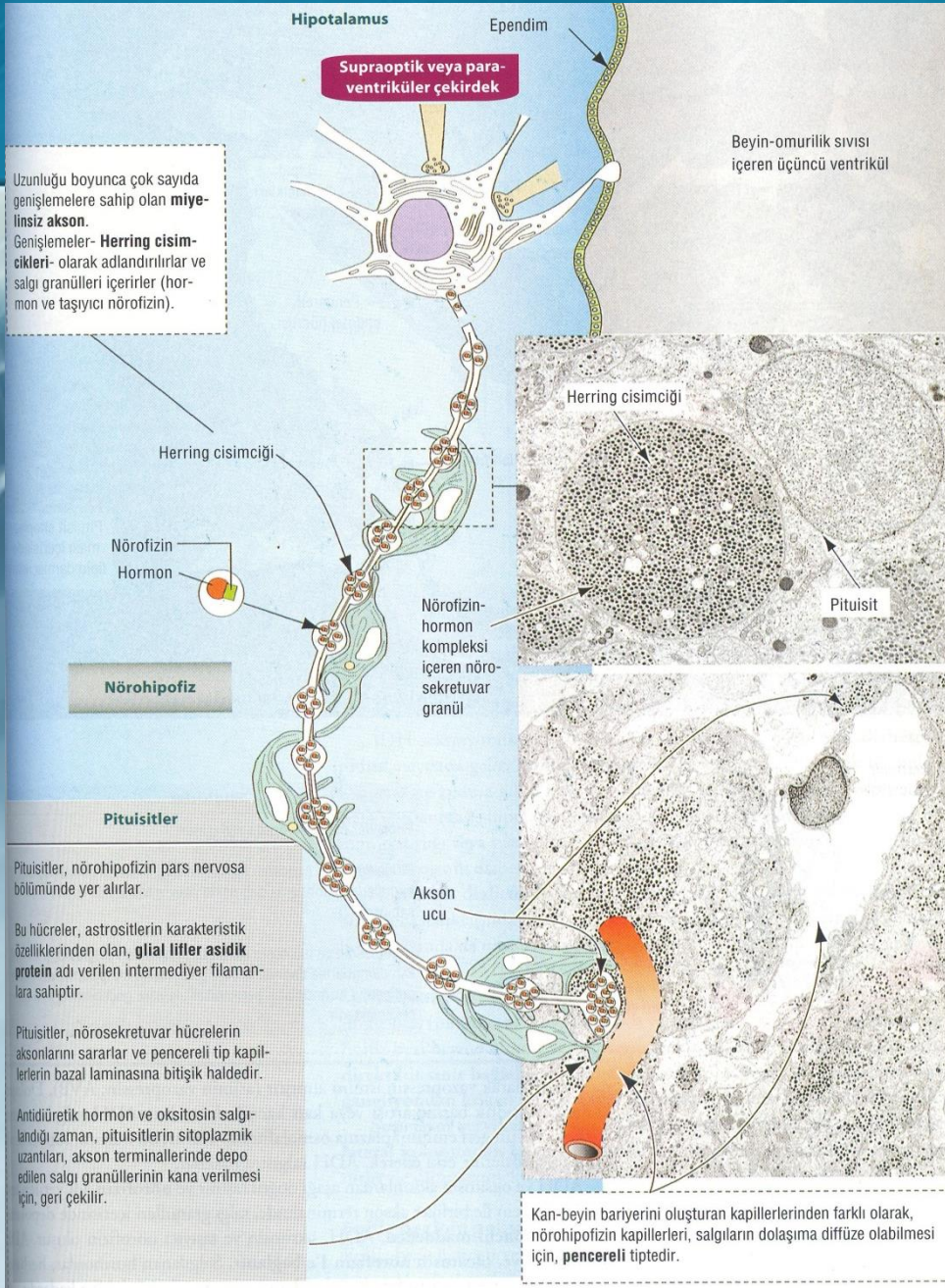
# Nörohipofiz – pars nervosa



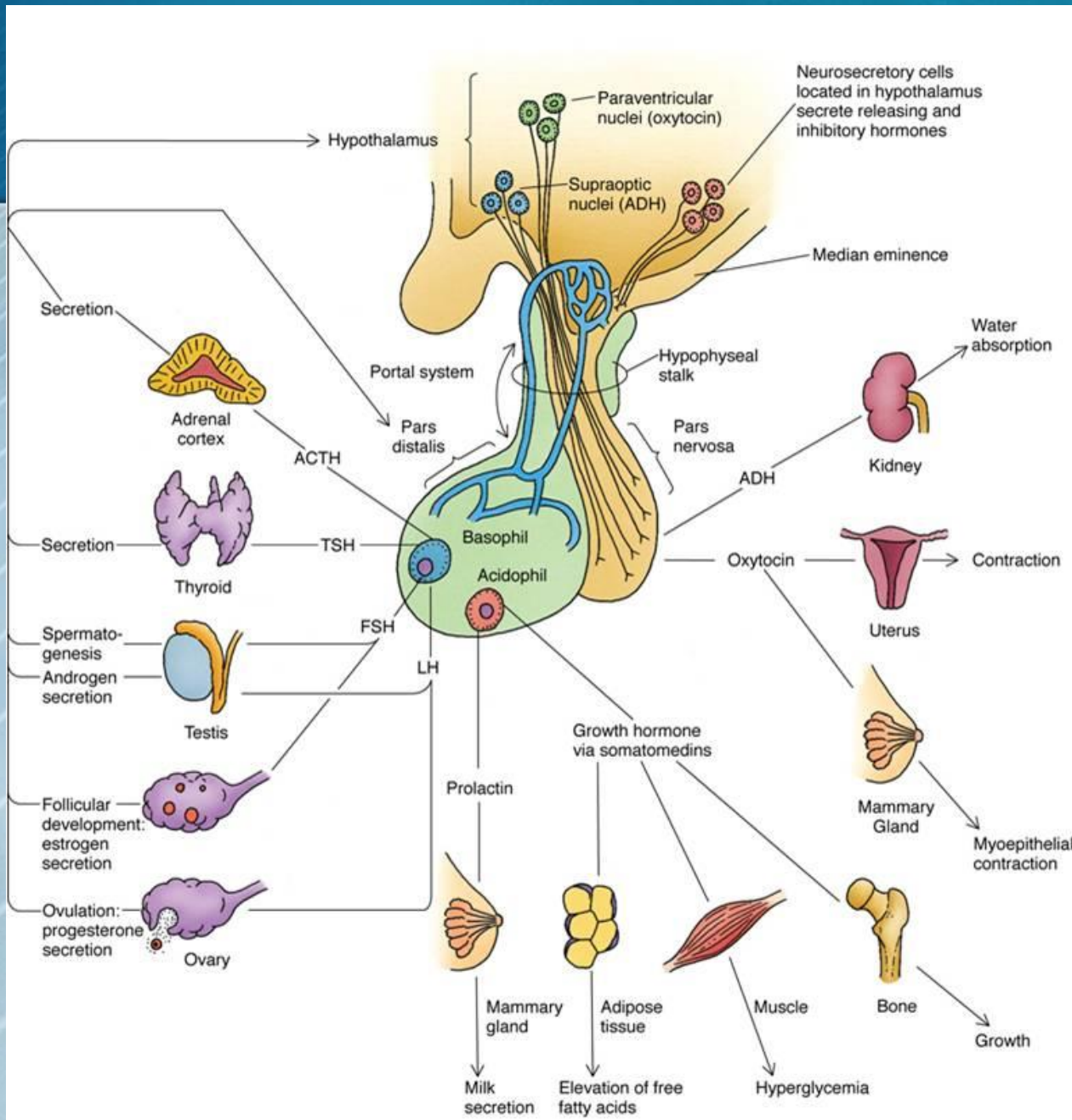
- ▣ Aksonlar
- ▣ Pencereli kapillerler
- ▣ Pitusitler



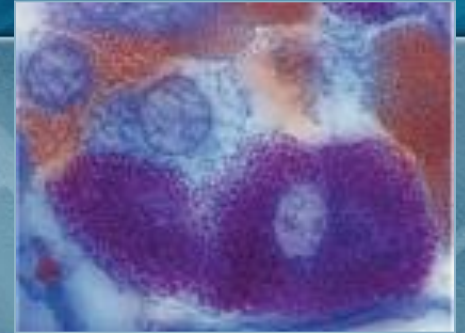
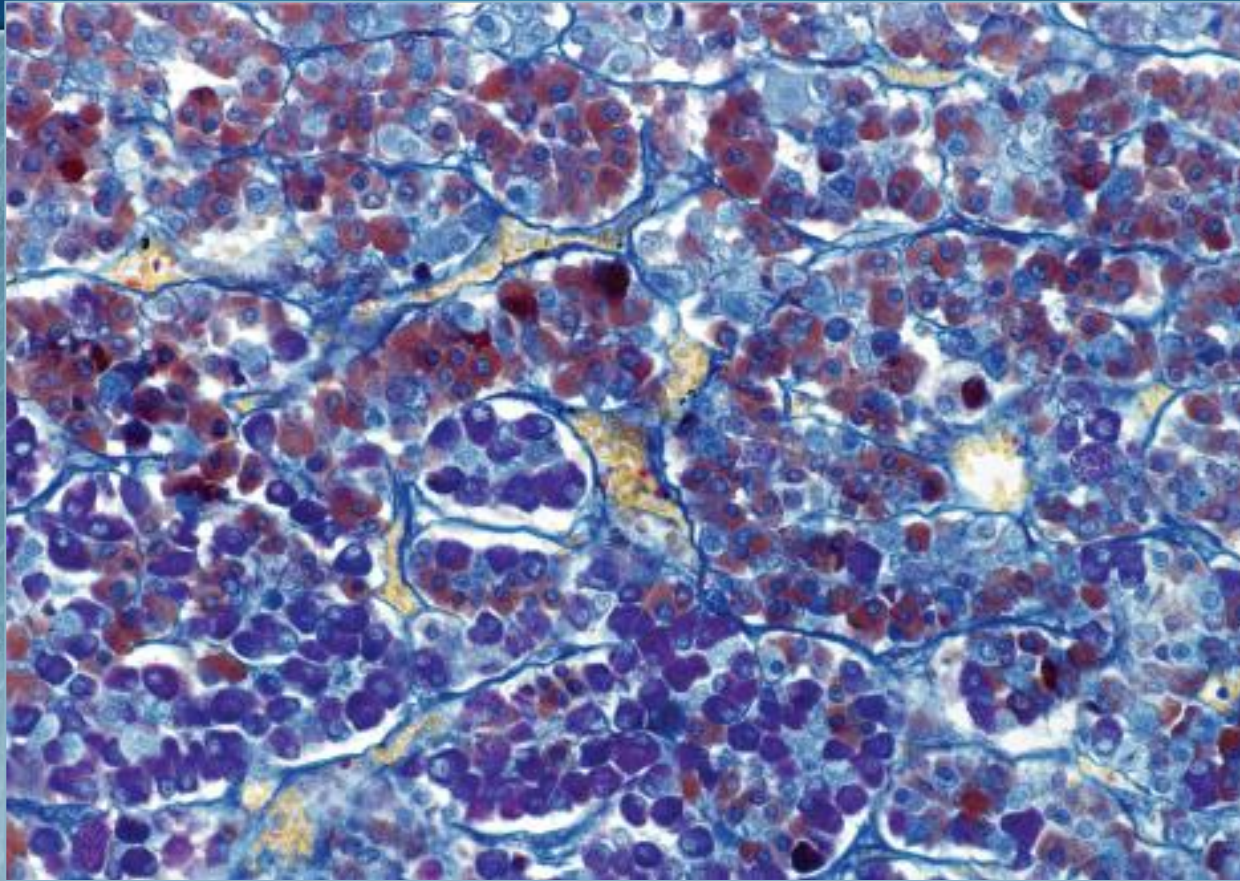
# Nörohipofiz







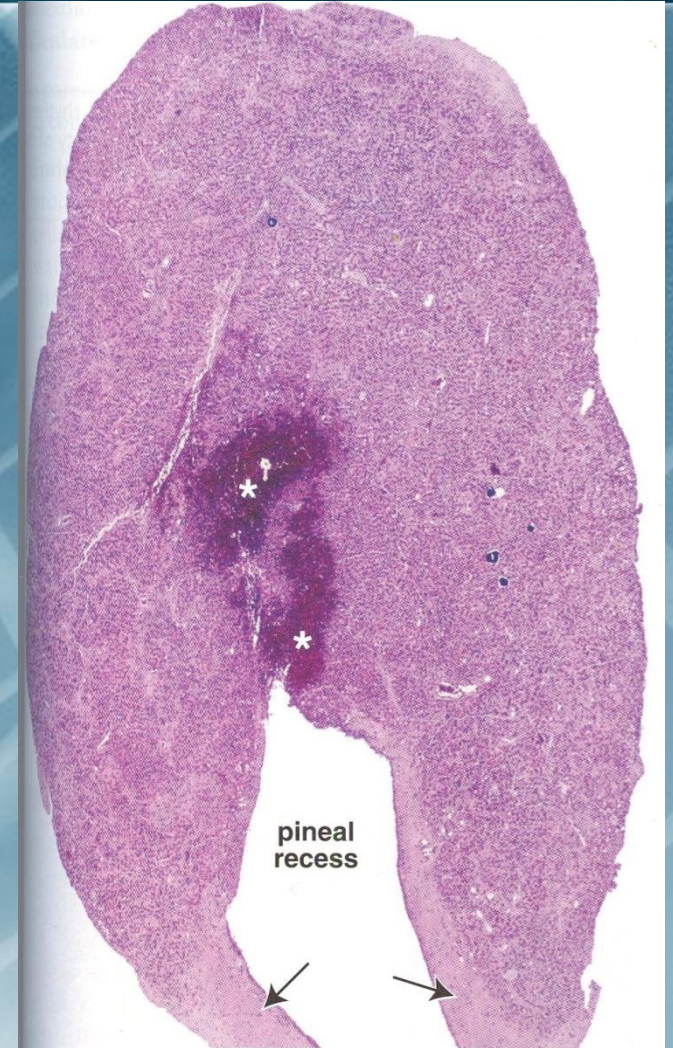






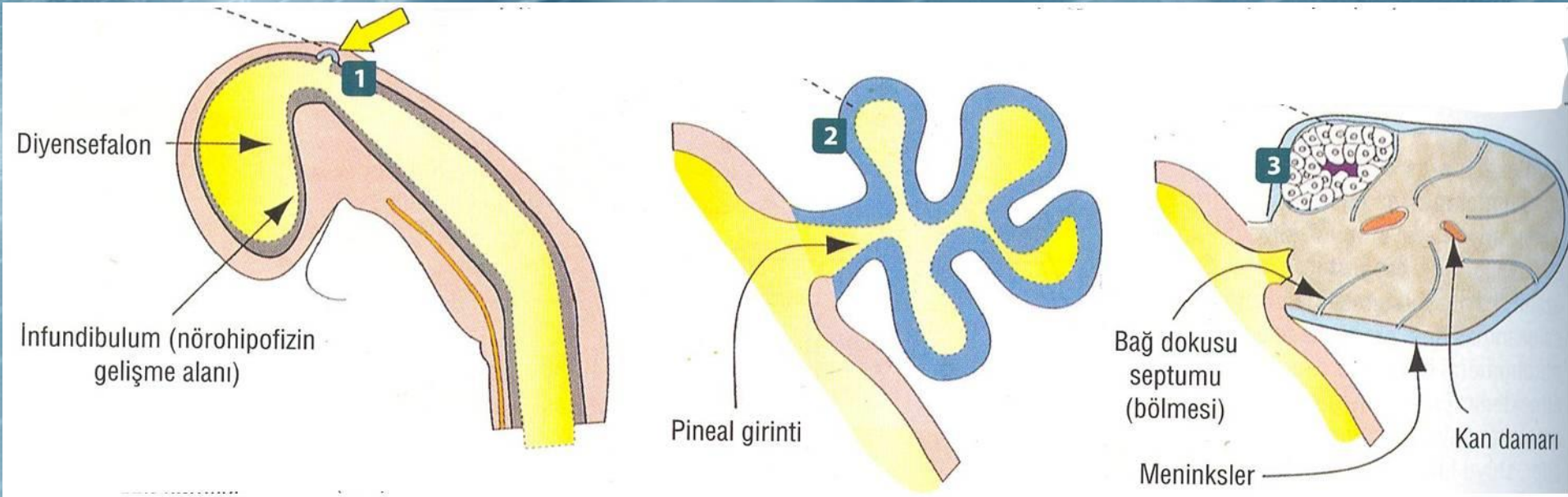
# Epifiz - Pineal Bez

- Gnlk vcut ritmini dzenleyen endokrin bir organ (melatonin)
- 3. ventrikln posterior duvarında yerleşik
- 100-200 mg, çam şekilli





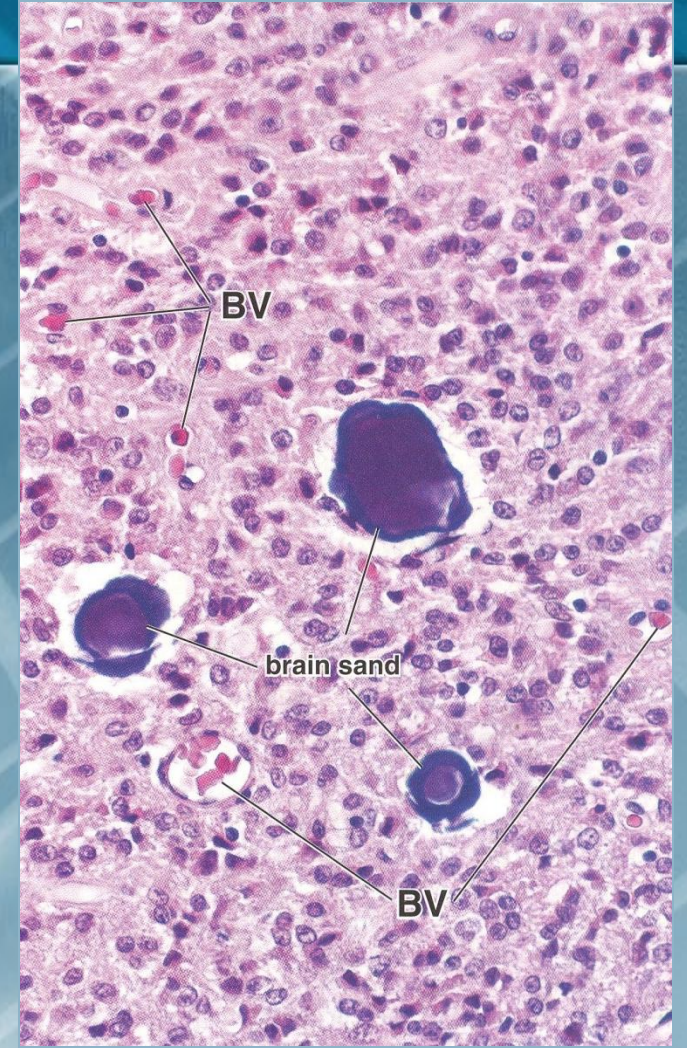
# Epifiz - gelişimi



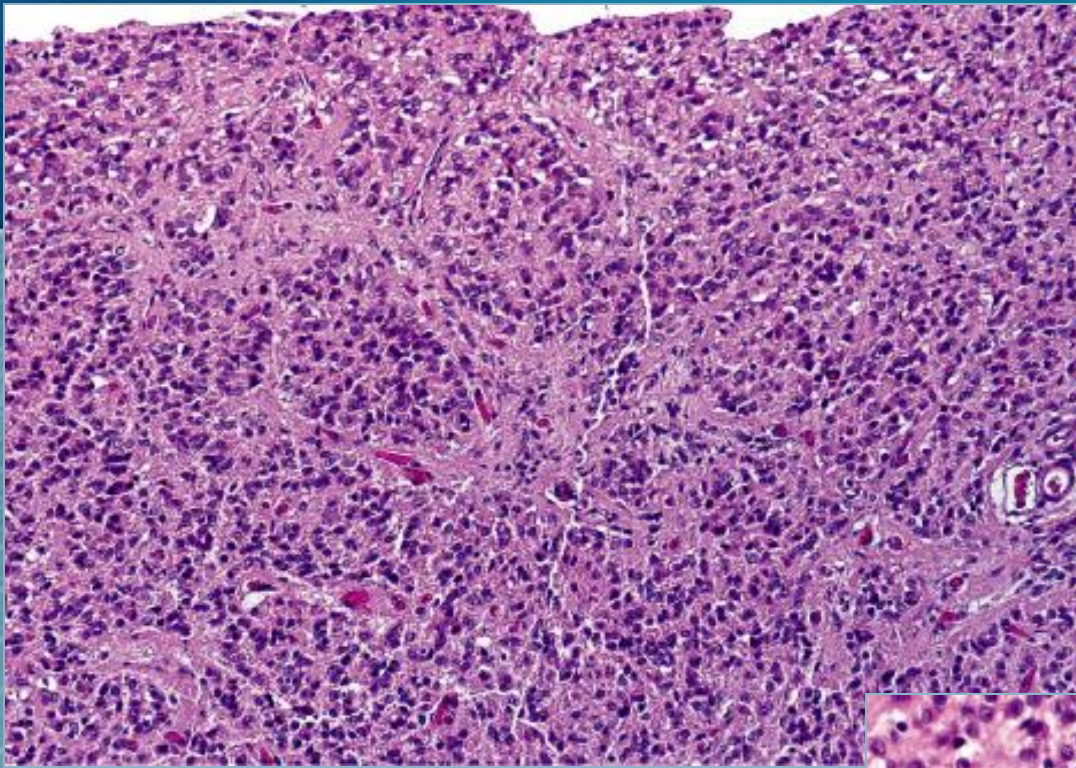


# Epifiz

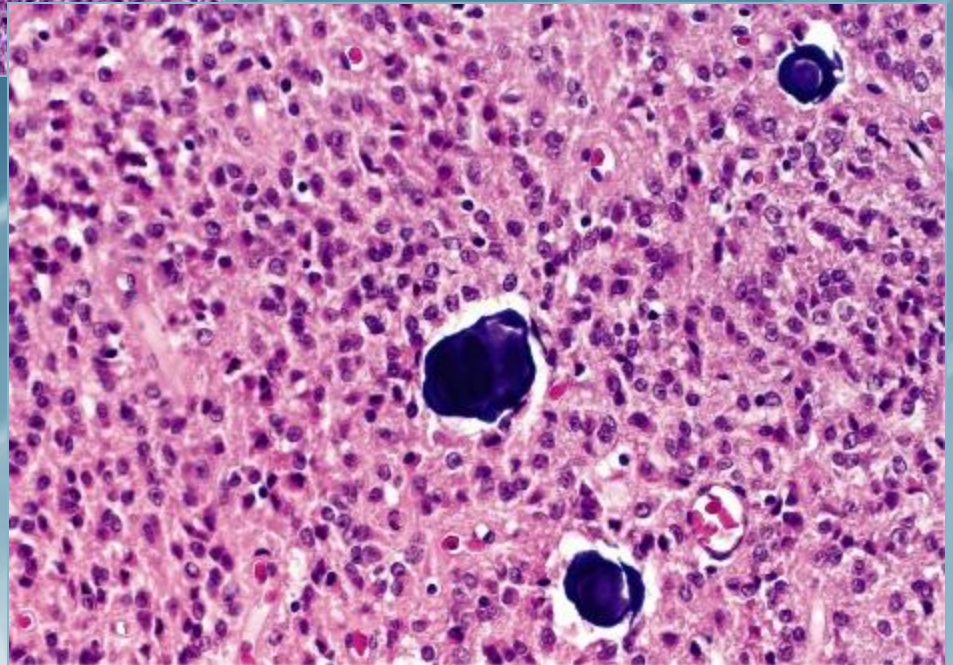
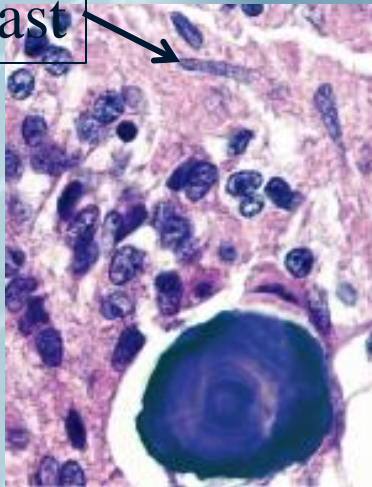
- İki hücre tipi mevcut:
  - Pinealositler
  - Glia benzeri intersitisyel hücreler: % 5
- └ Beyin kumları







Fibroblast

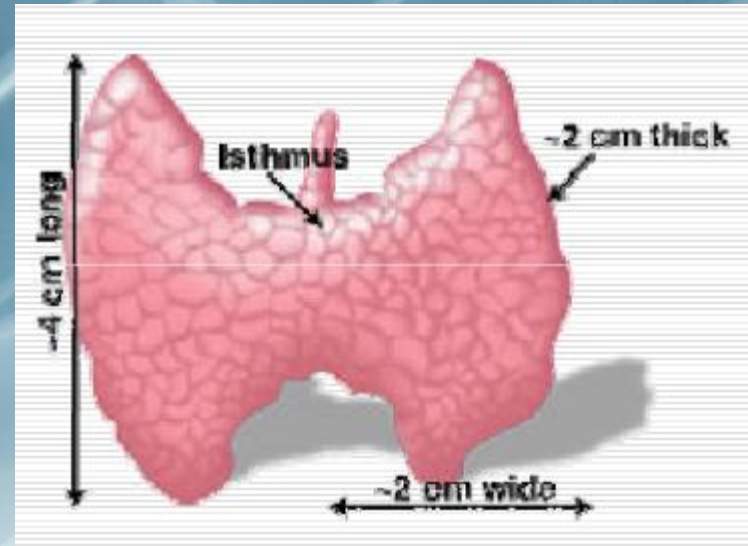
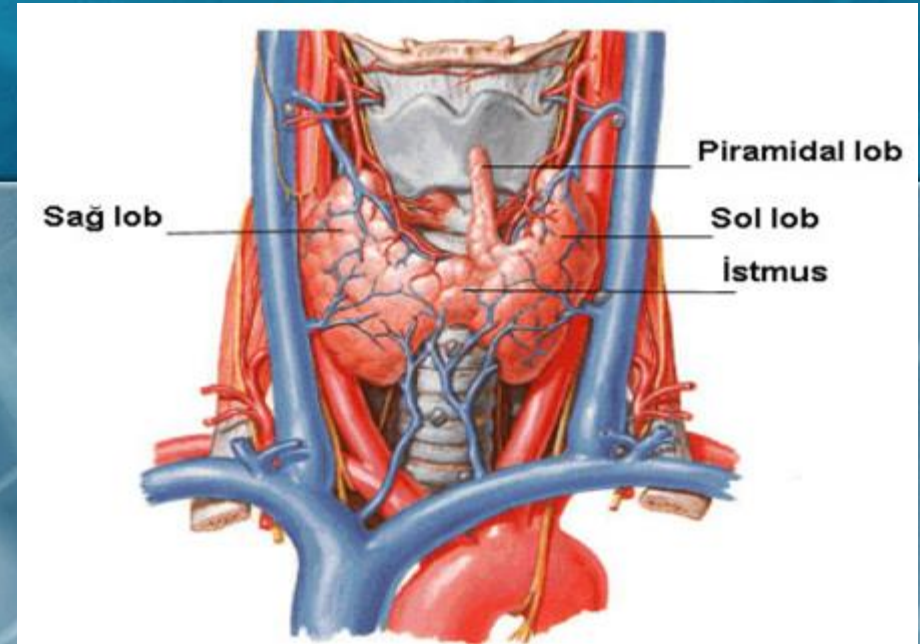




# Tiroit Bezi

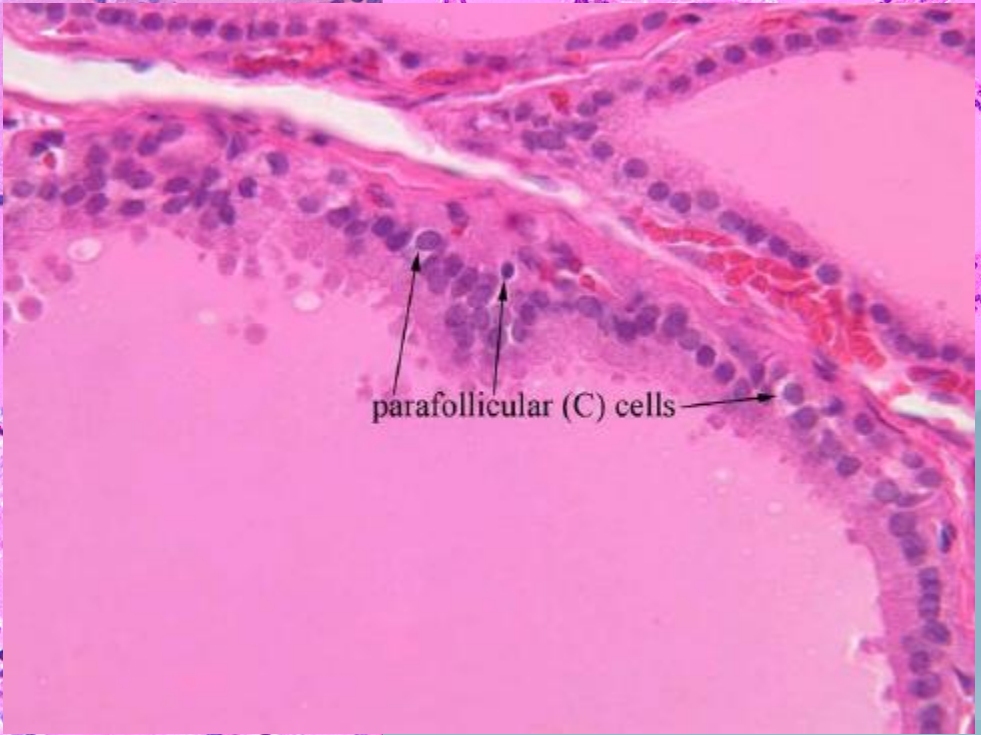
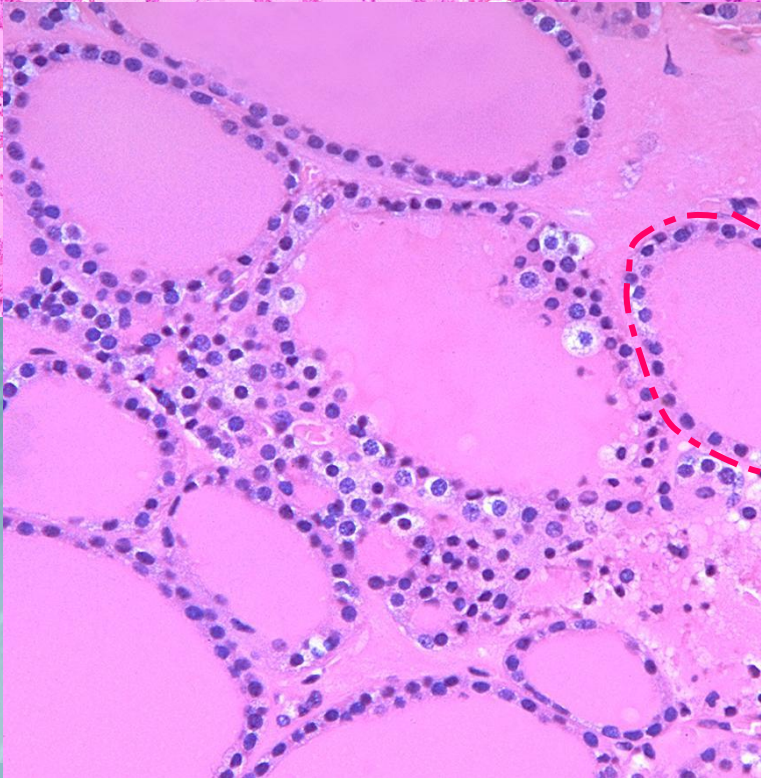
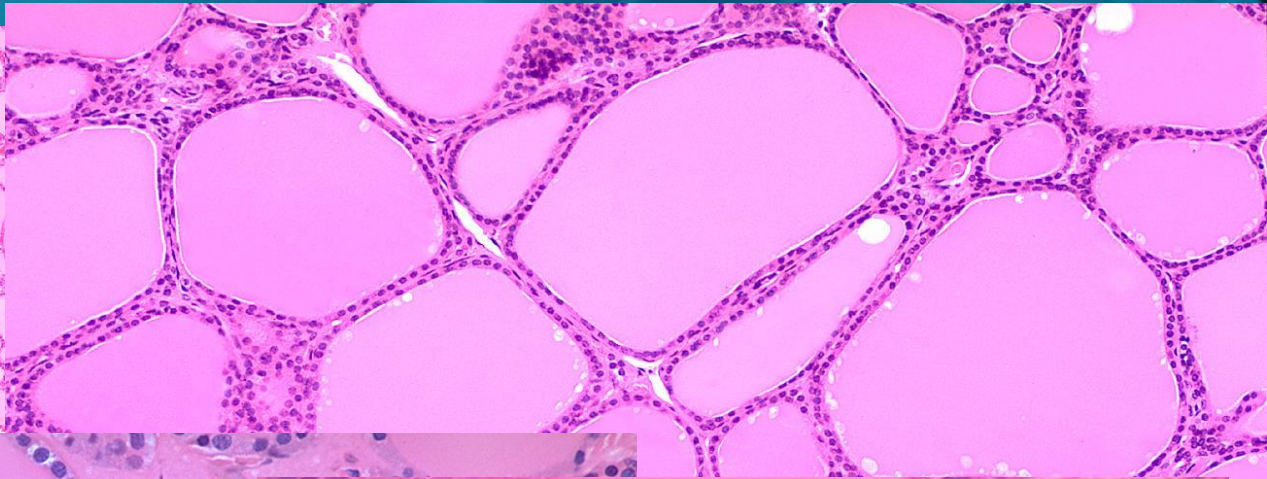
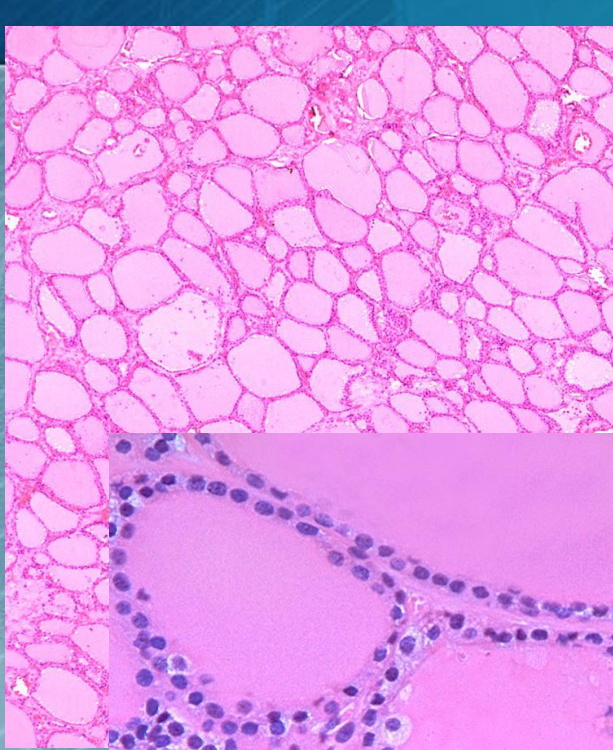


- ┌ İki lob
- ┌ 20-30 g
- ┌ Piramidal lob

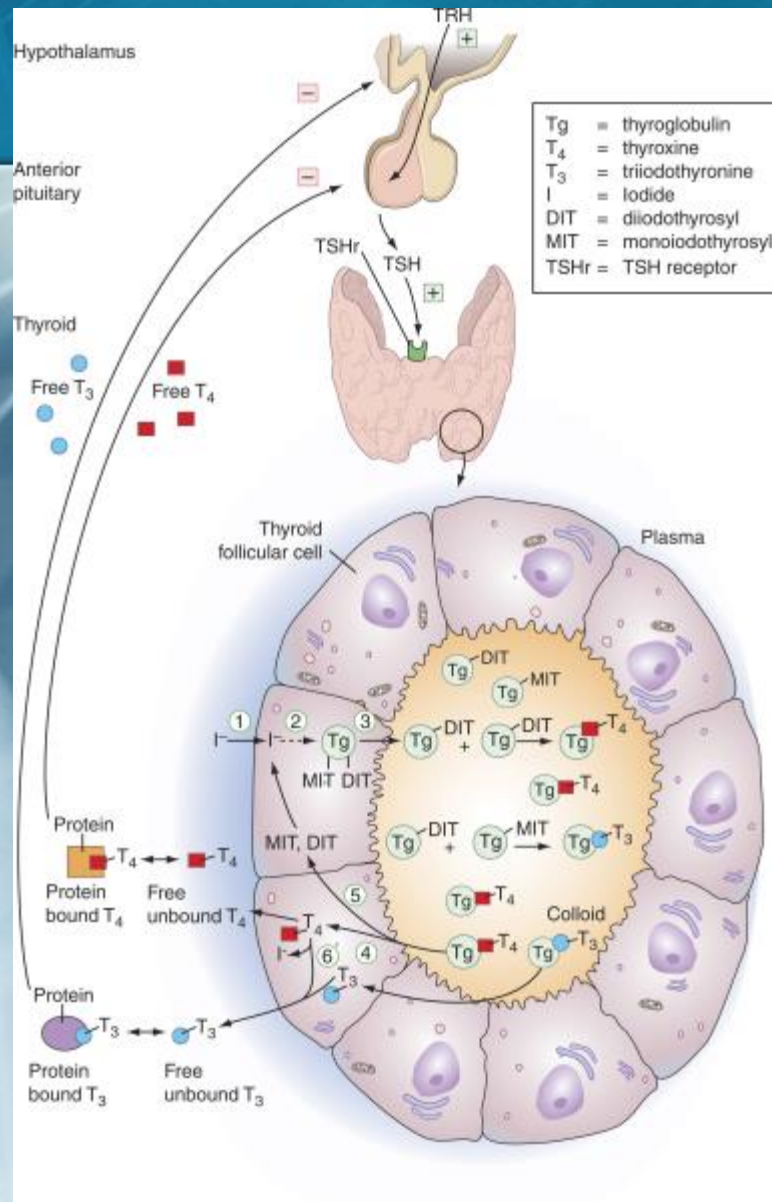




# Tiroit Bezi

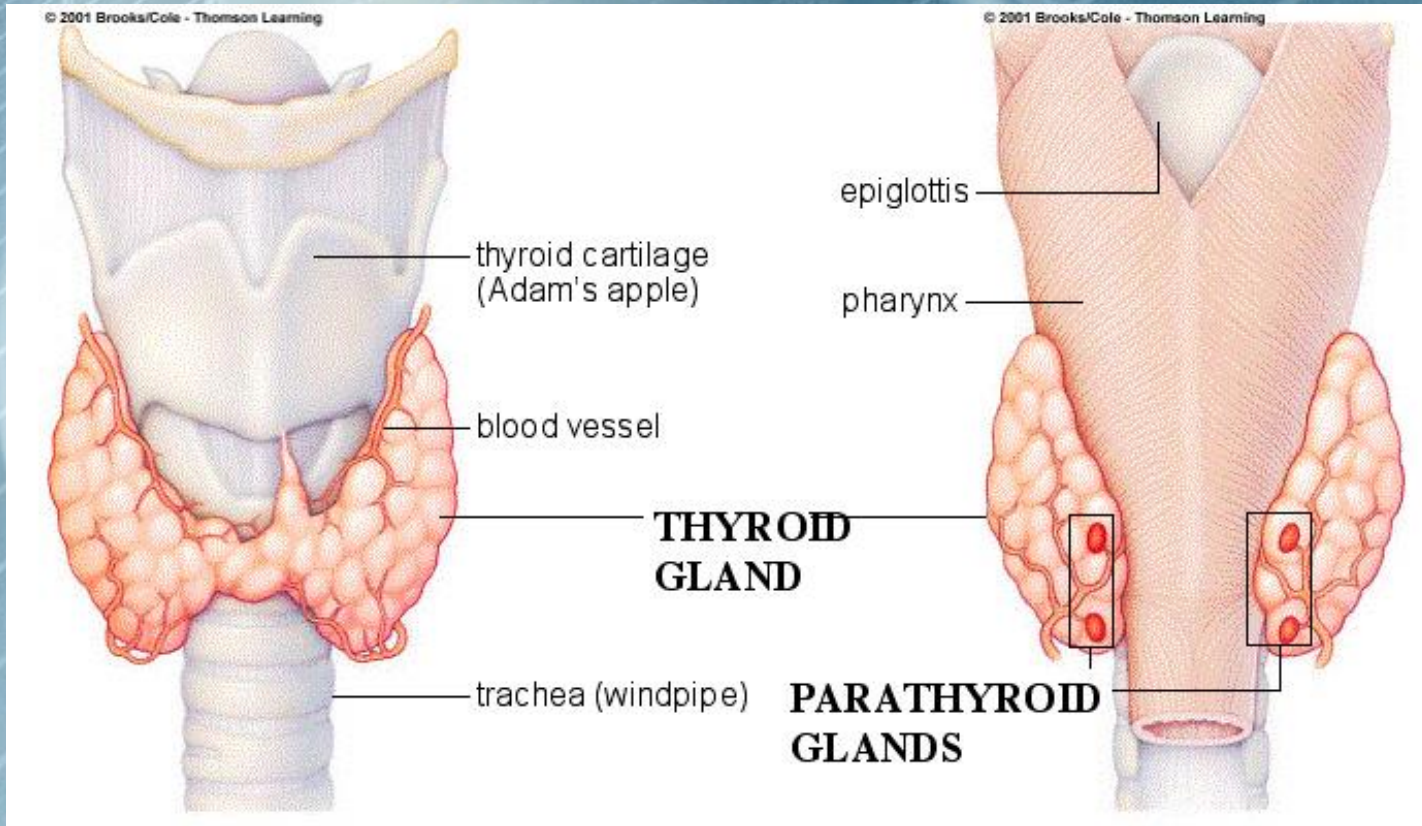




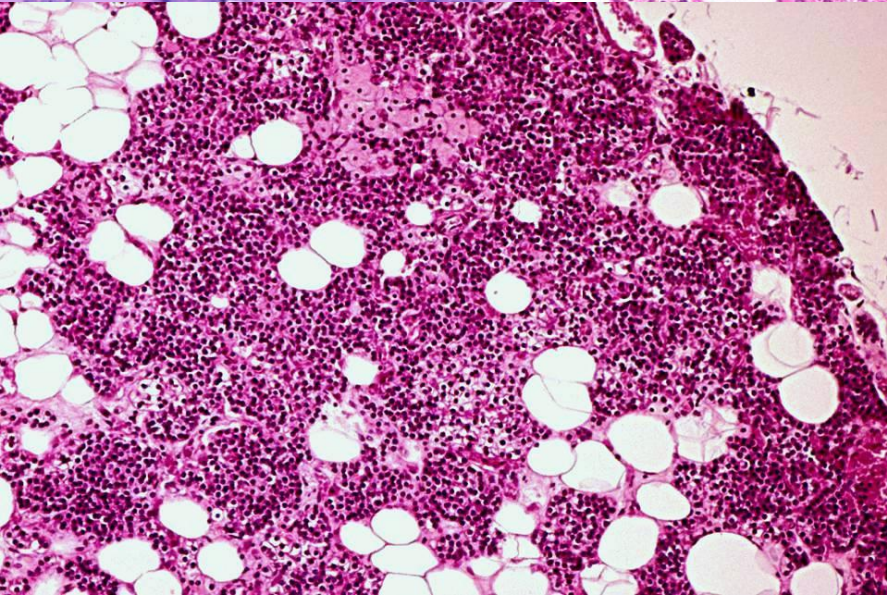
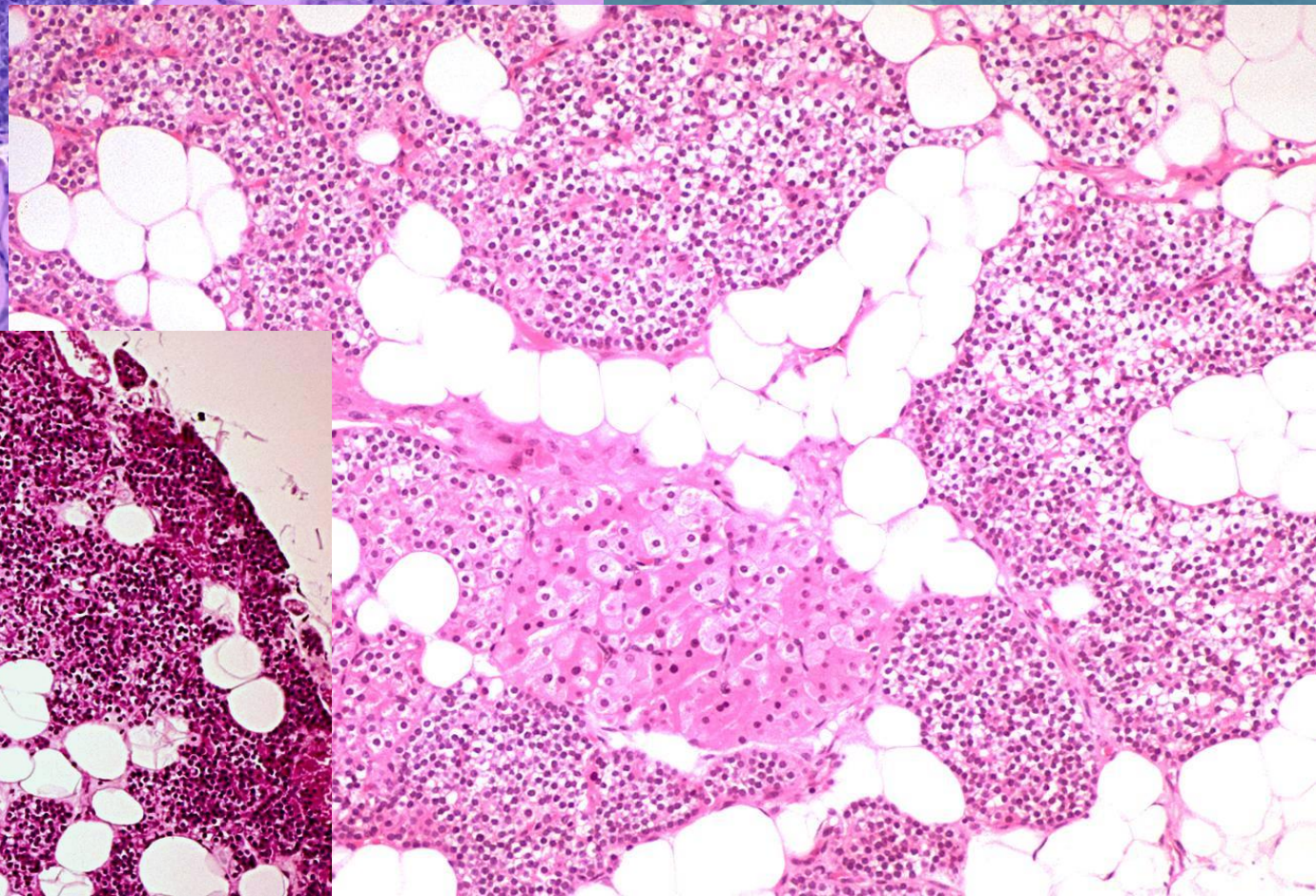
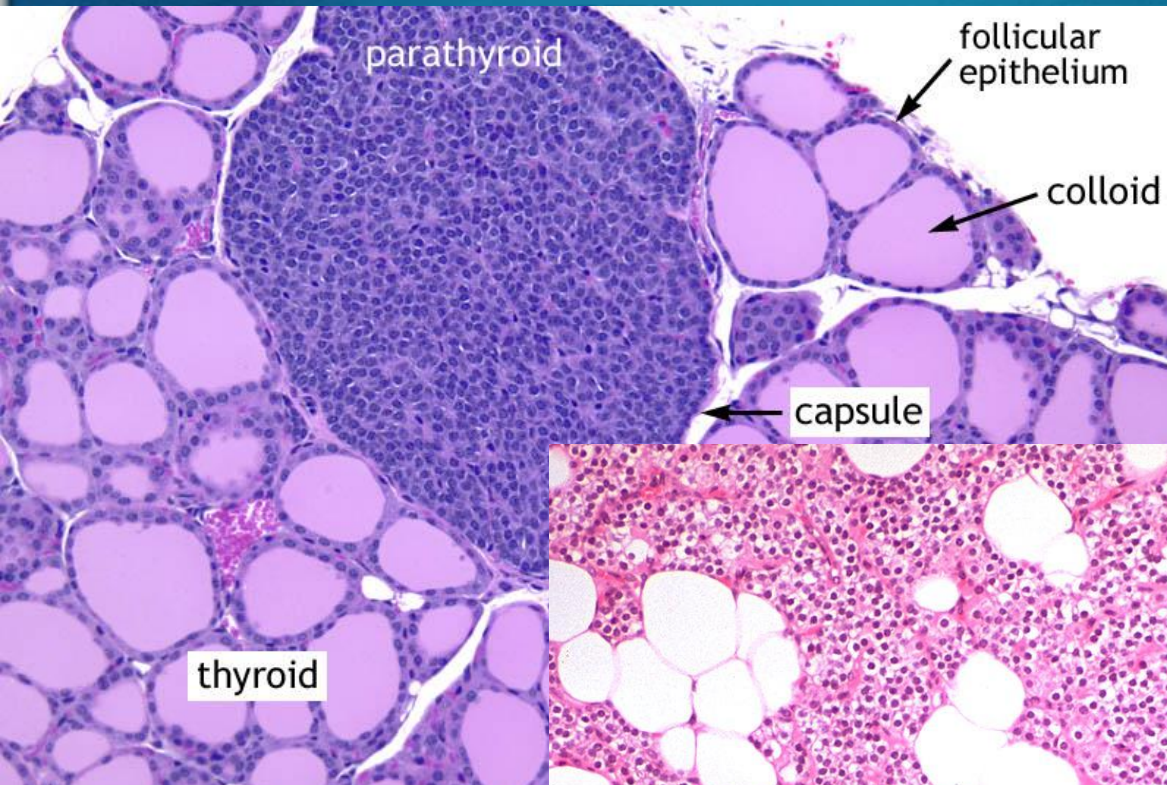




# Paratiroid Bez

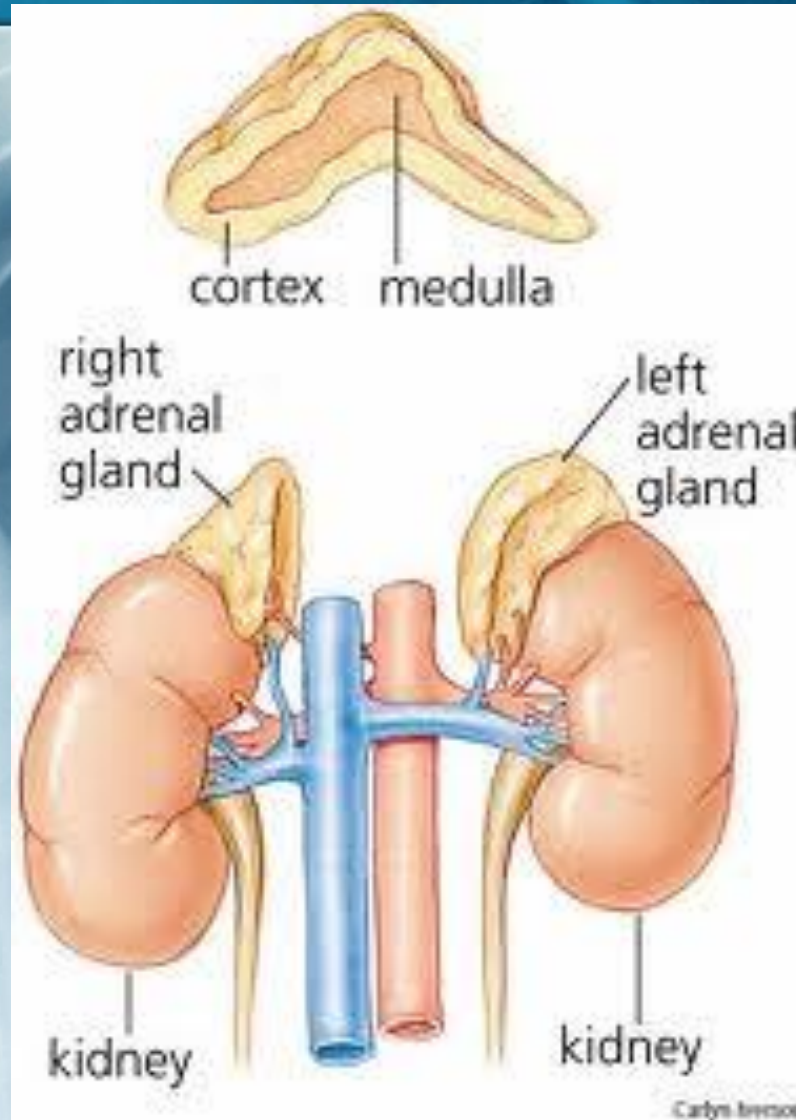






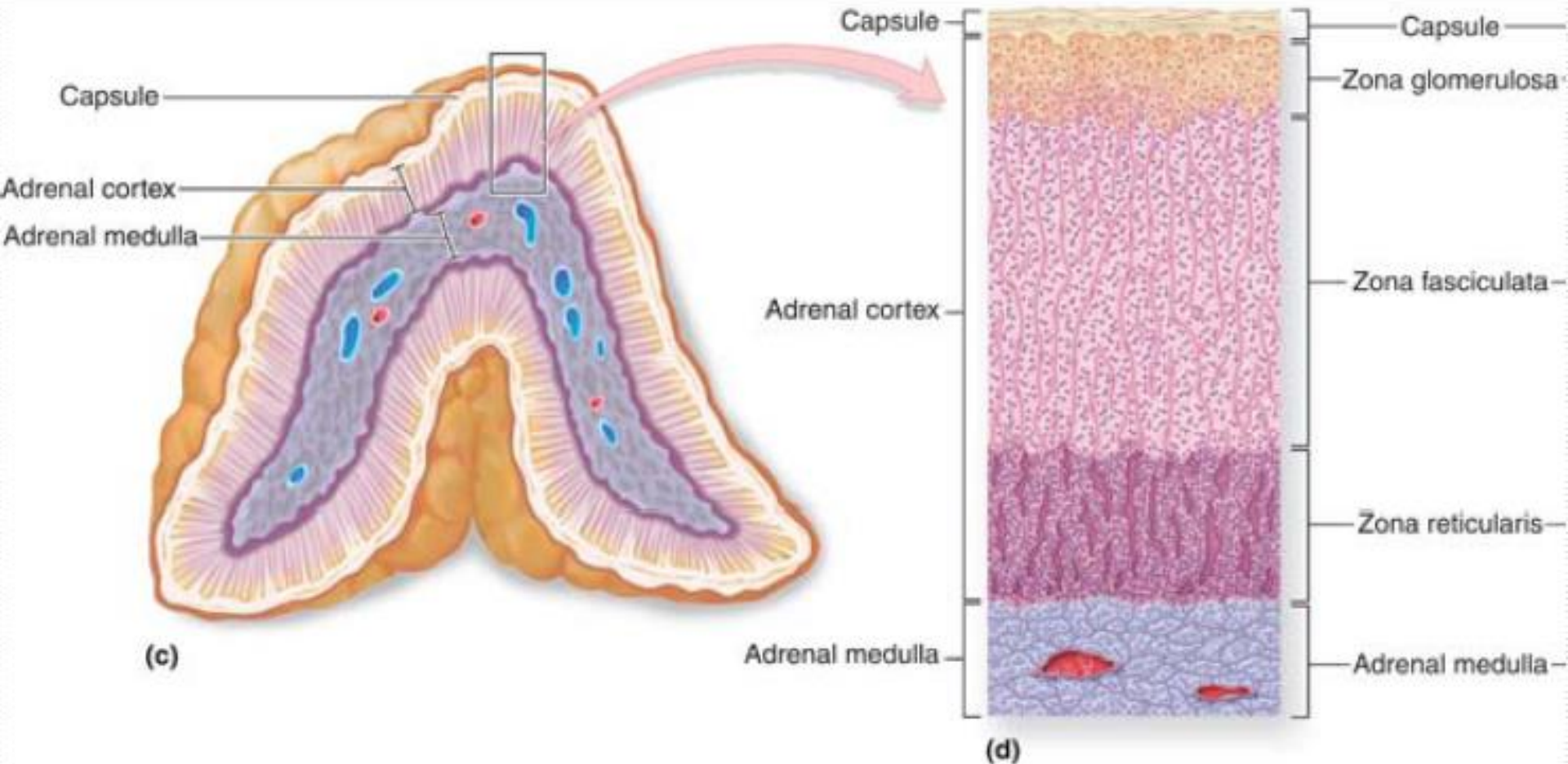


# Adrenal Bez



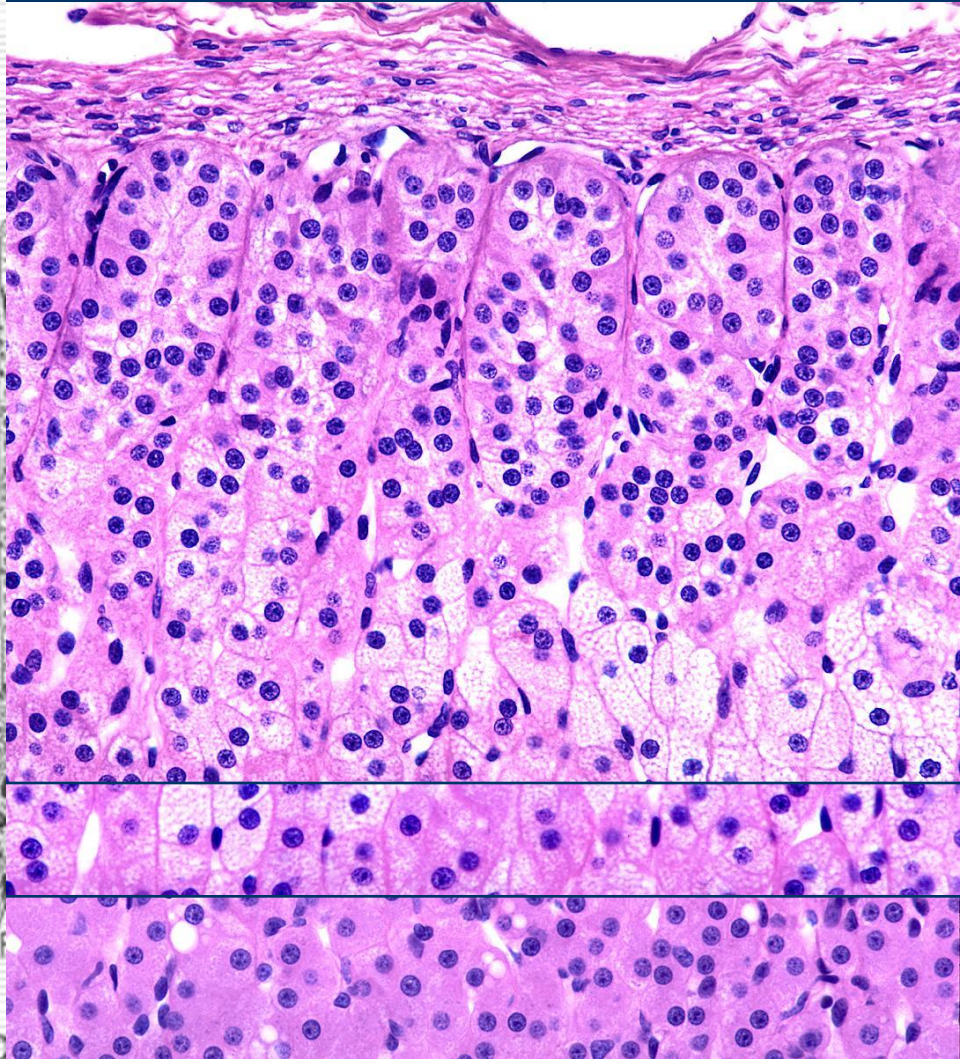
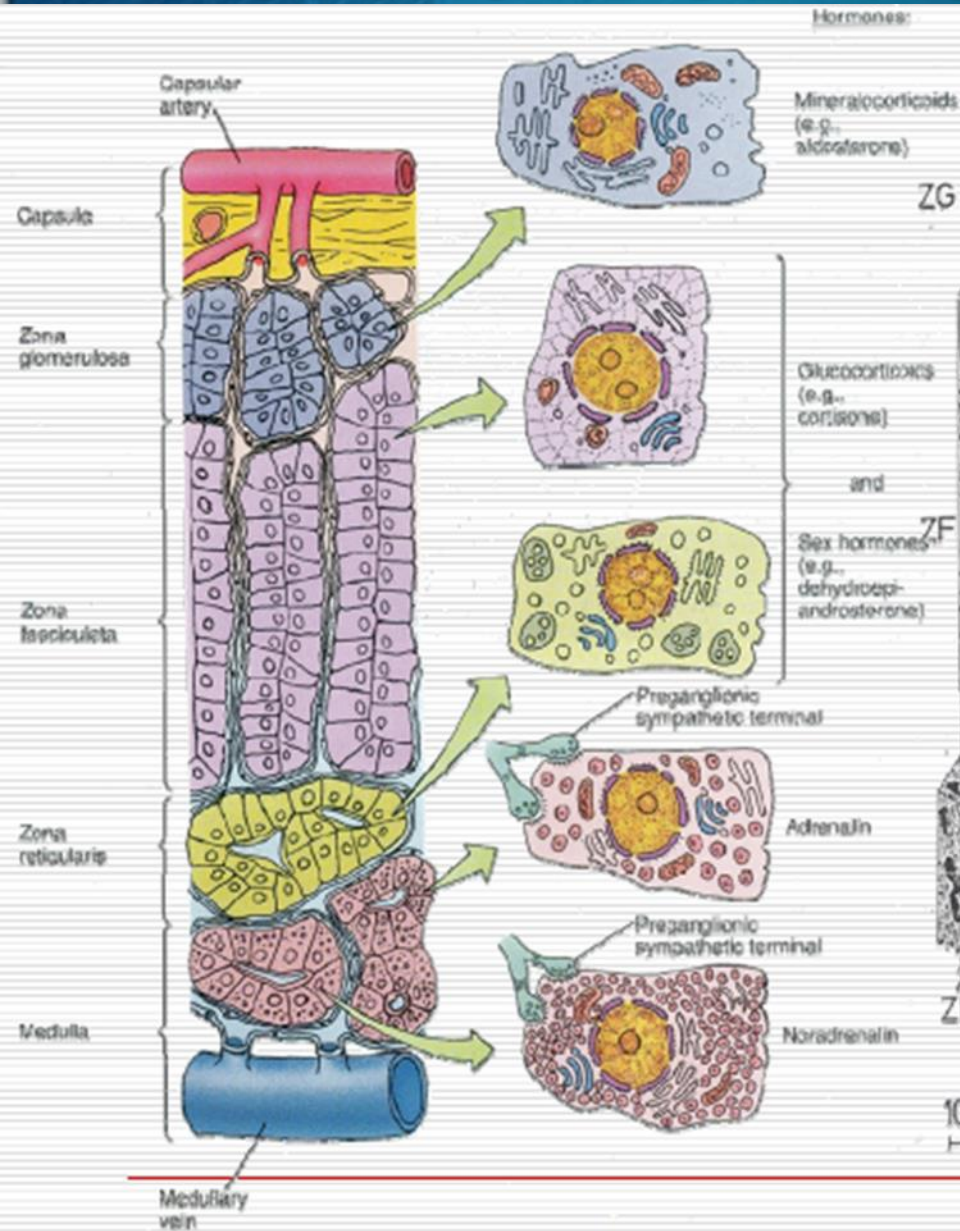


# Adrenal Bez



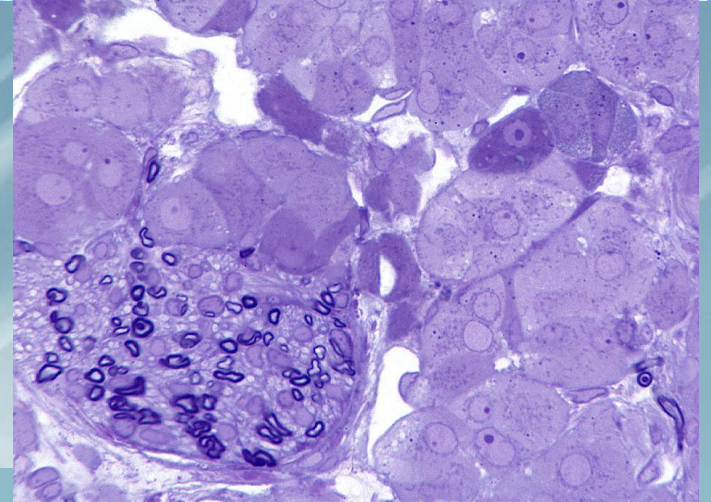
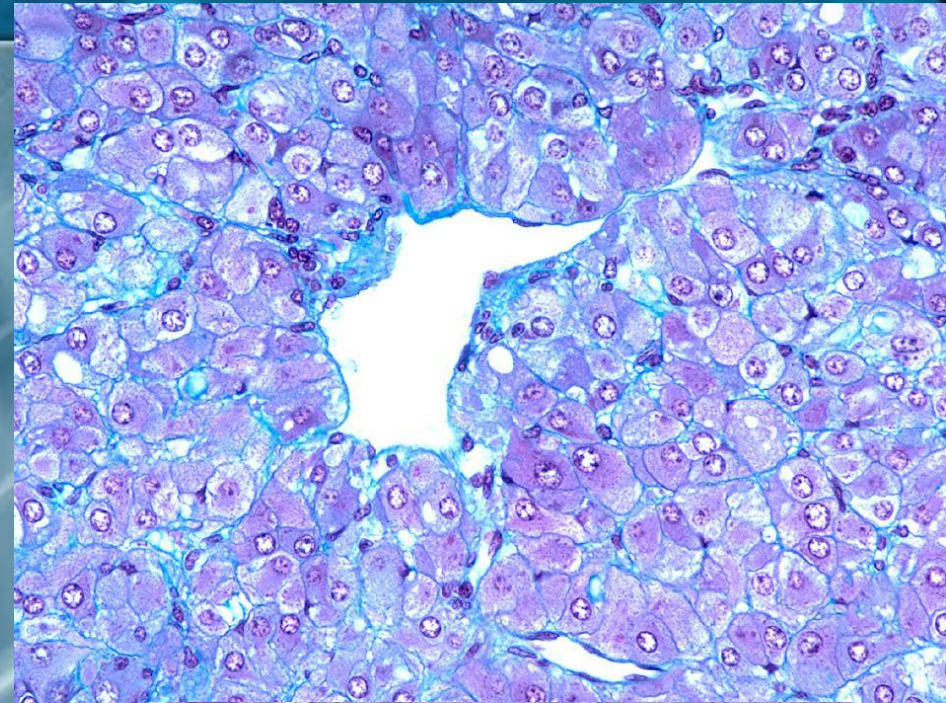
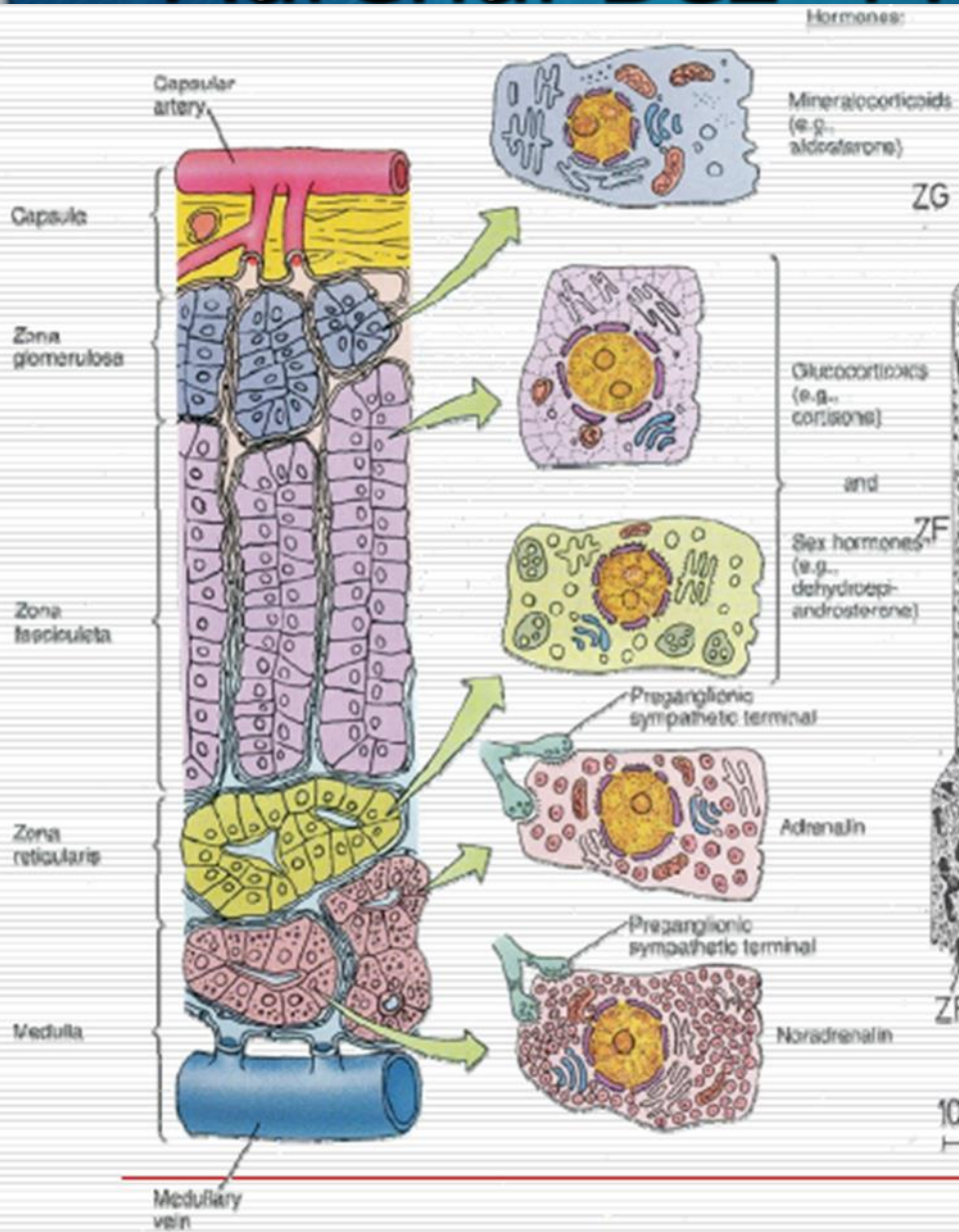


# Adrenal Bez- Korteks



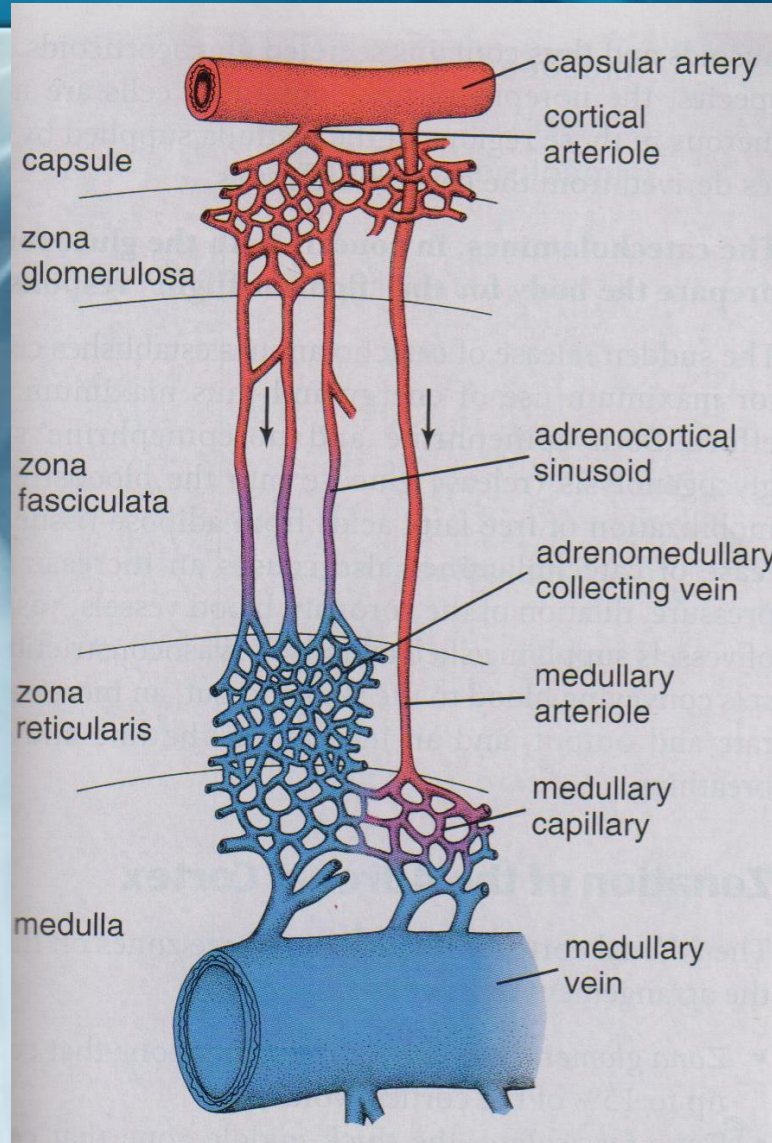


# Adrenal Bez- Medulla



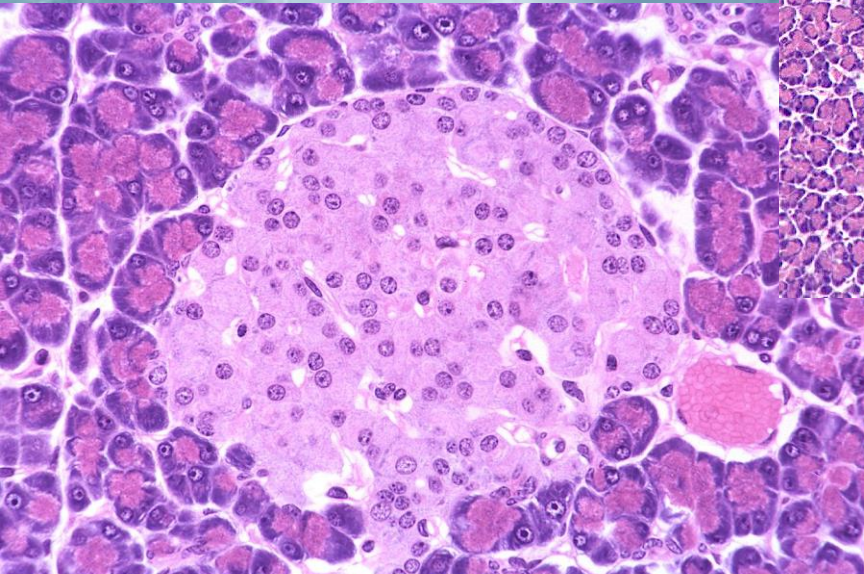
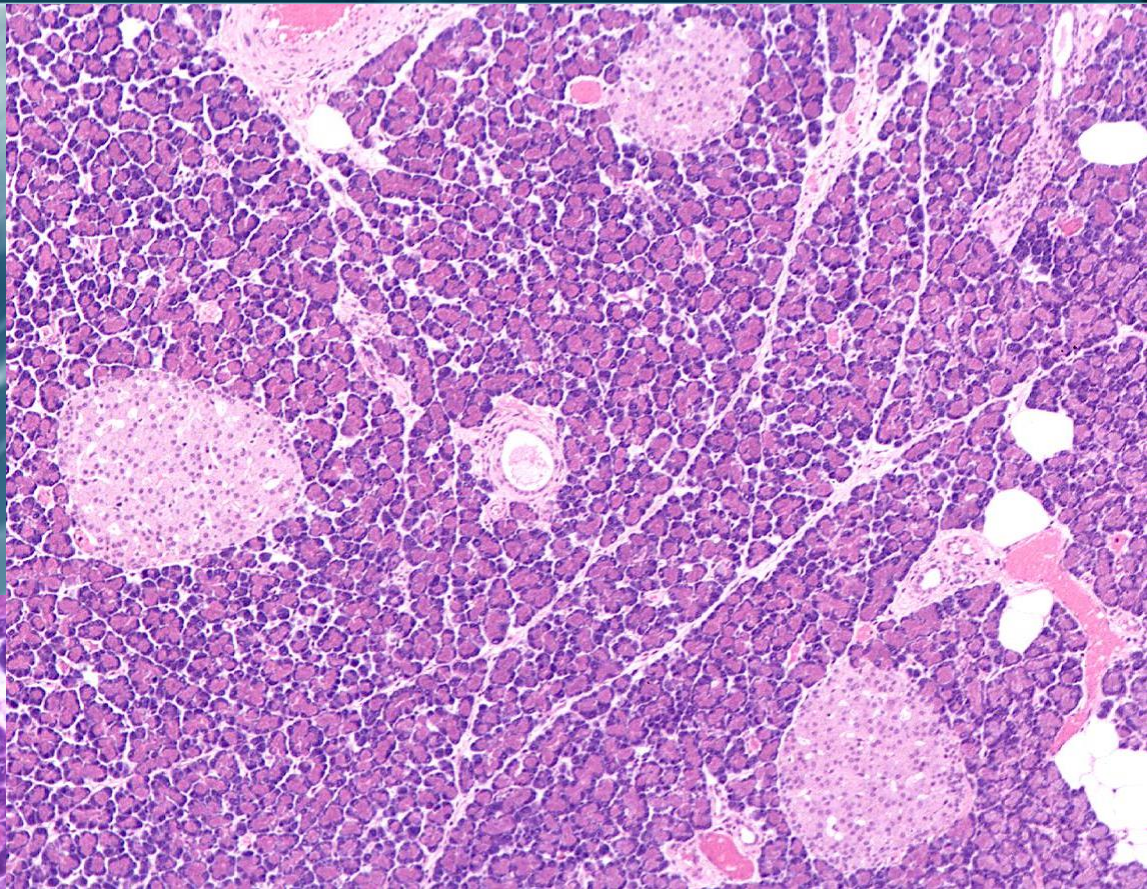
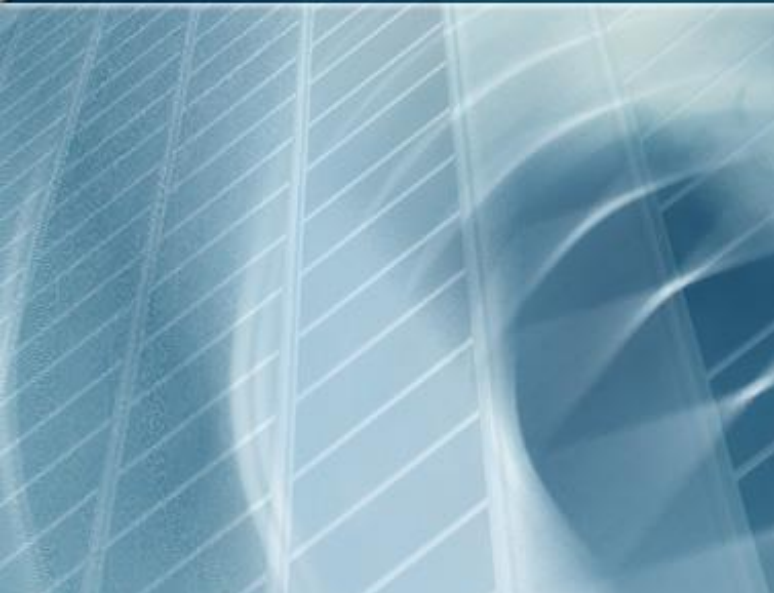


# Adrenal Bez-Kanlanması



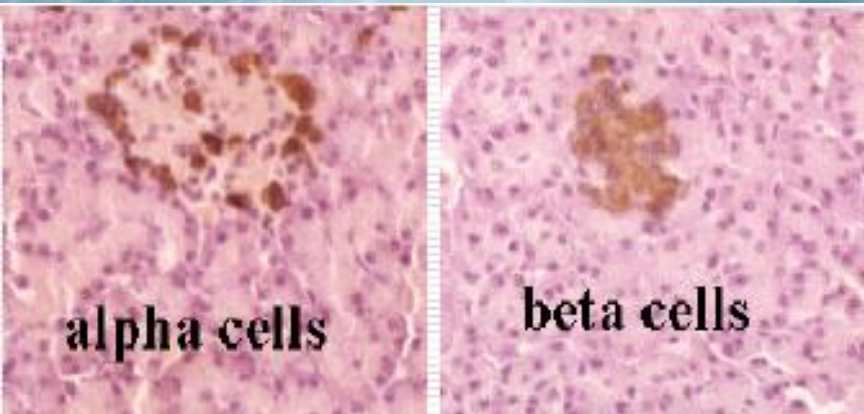
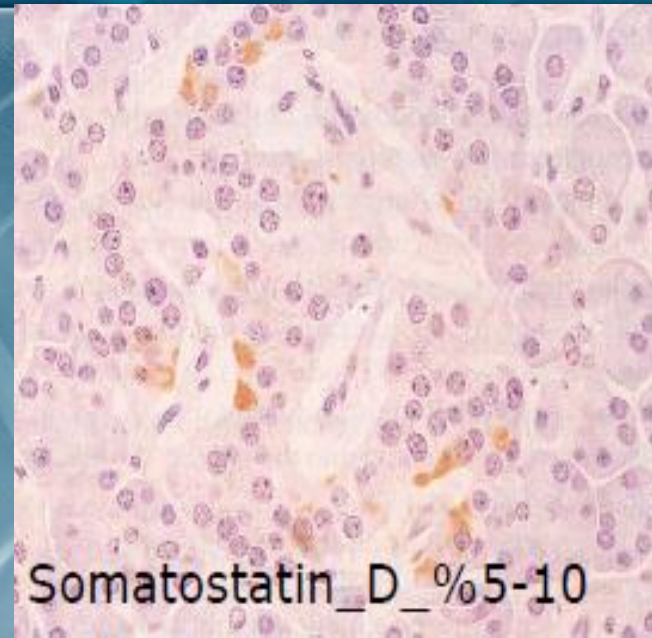
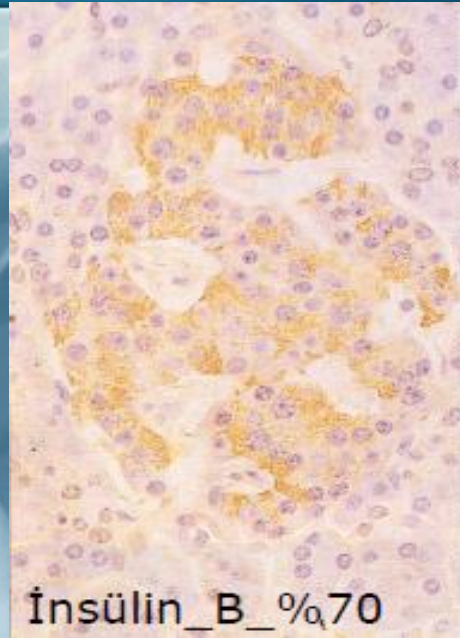
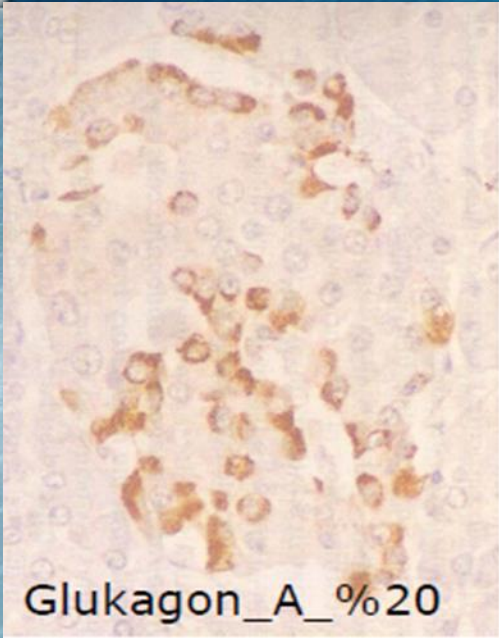


# Pankreas-endokrin salgı





# Pankreas-endokrin salgı



%1-2'si;  
Pankreatik polipeptit  
Vasoaktif Intestinal Peptit (VIP)